

Lääne-Viru maakond
Vinni vald
Männikvälja liivamaardla

MÄNNIKVÄLJA LIIVAKARJÄÄRI
(maavara kaevandamise luba nr L.MK/322005)
MARKŠEIDERIMÕÕDISTUS
Seisuga 14.04.2026
Töö nr 26-959

Tellija: osäühing Moreen
Kuuri
Võisiku küla
Põltsamaa vald
Jõgeva maakond
48029

Teostaja: Maavarauuringud OÜ
Liiva 41
Tartu linn
Tartu
50303

Vastutav täitja: Ranek Rohtla
/allkirjastatud digitaalselt/
geoloog ja diplomeeritud markšeider 6 tase
Tunnistus 189745

Tartu 2026

SISUKORD

1.	Sissejuhatus.....	3
2.	Mäeeraldise üldandmed ja geoloogiline iseloomustus.....	3
	2.1. Mäeeraldiste üldandmed.....	3
	2.2. Mäeeraldiste geoloogiline iseloomustus.....	10
3.	Markšeiderimõõdistus.....	10
4.	Kaevandatud maavara ja jääkvaru arvutus.....	11
	4.1. Kaevandatud maavara maht	11
	4.2. Jääkvaru maht	12
5.	Kokkuvõte.....	13
6.	Kasutatud materjalid.....	13

Tekstilisad

1.	Arvutiprogramm Surfer raport. Männikvälja liivakarjääri mäeeraldisel katendipuistangutes olev maht seisuga 14.04.2026	14
2.	Arvutiprogramm Surfer raport. Männikvälja liivakarjääri mäeeraldiselt kaevandatud materjali (ehituskruusa ja ehitusliiva) maht kokku ajavahemikul 24.07.2024–14.04.2026	15
3.	Arvutiprogramm Surfer raport. Männikvälja liivakarjääri mäeeraldisel laopuistangutes olev maht seisuga 14.04.2026	16
4.	Männikvälja liivakarjääri väljavõte maardlate registrist seisuga 30.06.2024.....	17
5.	Maapinna kõrguspunktid seisuga 14.04.2026 (ainult CD-I; säästame loodust)	18

Graafilised lisad

1. Männikvälja liivakarjääri markšeiderimõõdistuse plaan. Mõõtkava 1:1000
2. Männikvälja liivakarjääri markšeiderimõõdistuse plaani läbilõiked A–B ja C–D

1. SISSEJUHATUS

Männikvälja liivamaardla (nr 411) Männikvälja liivakarjääri markšeiderimöödistamine tehti osaühing MOREEN tellimisel.

Markšeiderimöödistamise tegemisel on lähtutud majandus- ja taristuministri 10.05.2019. a määrusest nr 32 „Markšeiderimöödistuse täpsustatud nõuded ja kord” ja 01.01.2017. a kehtima hakanud Maapõueseaduse § 76.

Markšeiderimöödistamise välitööd on tehtud 14.04.2026. a.

Markšeiderimöödistuse aruande koostas Maavarauuringud OÜ geoloog ja diplomeeritud mäeinsener Ranek Rohtla, möödistuse välitöö tegid Tiit Kalmus ja Ranek Rohtla. Markšeiderimöödistamise plaani koostamisel on kasutatud lisaks käesoleva möödistuse andmetele OÜ Eesti Geoloogiakeskus poolt 2011.a koostatud Liiva geoloogiline uuring Rägavere vallas Männikvälja laienduse uuringuruumis (varu seisuga 01.04.2011) aruannet, maavara kaevandamise loa L.MK/322005 materjale ja Maavarauuringud OÜ poolt koostatud Männikvälja liivakarjääri markšeiderimöödistuse materjale seisuga 24.07.2024.

2. MÄEERALDISTE ÜLDANDMED JA GEOLOOGILINE ISELOOMUSTUS

2.1. Mäeeraldiste üldandmed

Männikvälja liivakarjääri mäeeraldis (graafiline lisa 1) asub Männikvälja liivamaardlal (nr 411) Lääne-Viru maakonnas Vinni vallas Nurkse külas, hõlmates Moreen OÜ omandis olevast Uuepõllu maaüksusest (katastritunnus 70201:002:0129) osa. Männikvälja liivakarjääri mäeeraldise pindala on 4,71 ha ning mäeeraldise teenindusmaa pindala on 5,42 ha. Kaaveluba nr L.MK/322005 kehtib ajavahemikul 19.07.2012–19.07.2027. Kaaveluba kuulub osaühingule Moreen. Mäeeraldis hõlmab ehituskruusa aktiivse tarbevaru 2. plokki (pindala 4,71 ha) ja ehitusliiva aktiivse tarbevaru 3. plokki (pindala 4,71 ha) täies mahus. Plokid 2 ja 3 jäävad nii põhjaveetasemest kõrgemale kui ka põhjaveetasemest madalamale. Plokid 2 ja 3 on arvutatud protsentuaalse suhte alusel ühises ruumis: ehituskruus 38% ja ehitusliiv 62%. Kaevandamiselo saamisel (seisuga 19.07.2012) oli mäeeraldise ehituskruusa aktiivse tarbevaru 2. ploki algne maht 138,0000 tuh. m³, millest kaevandatav jääkvaru maht 111,0000 tuh. m³. Ehitusliiva aktiivse tarbevaru 3. ploki jääkvaru maht oli 225,0000 tuh. m³, millest kaevandatav jääkvaru maht 194,0000 tuh. m³.

Peale varu väljamist korrastatakse karjääri ala veekoguks.

Markšeiderimöödistuse andmetel (seisuga 15.12.2020) oli mäeeraldise ehituskruusa aktiivse tarbevaru 2. ploki jääkvaru maht 97,3000 tuh. m³, millest kaevandatav jääkvaru maht 70,3000 tuh. m³. Ehitusliiva aktiivse tarbevaru 3. ploki jääkvaru maht oli 196,1000 tuh. m³, millest kaevandatav jääkvaru maht 165,1000 tuh. m³.

Markšeiderimõõdistuse andmetel (seisuga 24.07.2024) oli mäeeraldise ehituskruusa aktiivse tarbevaru 2. ploki jääkvaru maht 81,1080 tuh. m³, millest kaevandatav jääkvaru maht 54,1080 tuh. m³. Ehitusliiva aktiivse tarbevaru 3. ploki jääkvaru maht oli 169,6810 tuh. m³, millest kaevandatav jääkvaru maht 138,6810 tuh. m³.

Kaevandaja poolt deklareeritud mahtude alusel (seisuga 31.03.2026; *lisa 4*) oli mäeeraldise ehituskruusa aktiivse tarbevaru 2. ploki jääkvaru maht 77,8780 tuh. m³, millest kaevandatav jääkvaru maht 50,8780 tuh. m³. Ehitusliiva aktiivse tarbevaru 3. ploki jääkvaru maht oli 136,5110 tuh. m³, millest kaevandatav jääkvaru maht 105,5110 tuh. m³.

Männikvälja liivakarjääri mäeeraldis piirneb põhja, ida ja lõuna poolt ehitusliiva aktiivse reservvaru 1. plokiga (pindala 19,32 ha, jääkvaru maht 1623 tuh. m³). Lõuna ja lääne poolt piirneb ehituskruusa passiivse tarbevaru 4. plokiga (pindala 0,98 ha, jääkvaru maht 28 tuh. m³) ja ehitusliiva passiivse tarbevaru 5. plokiga (pindala 0,98 ha, jääkvaru maht 47 tuh. m³). Plokkidest 4 ja 5 lääne-edela poole jäävad ehituskruusa aktiivse tarbevaru 6. plokk (pindala 5,09 ha, jääkvaru maht 148 tuh. m³) ja ehitusliiva aktiivse tarbevaru 7. plokk (pindala 5,09 ha, jääkvaru maht 242 tuh. m³).

Männikvälja liivakarjäär piirneb lõunast Katerinentali maaüksusega (katastritunnus 70201:002:0145), põhjast ja kirdest Soo maaüksusega (katastritunnus 70201:002:0381), idas ja läänes Uuepõllu (katastritunnus 70201:002:0129) maaüksus jätkub.

Lähim elamu asub liivakarjäärist *ca* 135 m kaugusel läänes Väike-Uueküla maaüksusel (katastritunnus 70201:002:2210).

Üle mäeeraldise kaguserva kulgeb 253 m pikkusel lõigul kohalik tee. Kaevandaja on enne karjääri avamist rajanud mäeeraldise teenindusala piirile ümbersõidu. Mäeeraldise teenindusala läänepiiril kulgeb elektriülekandeliini kaitsevöönd. Mäeeraldise piirist *ca* 385 m kaugusele edelaase jääb vääriselupaik.

Mäeeraldise maa-alale ei jää hooneid, kommunikatsioone ega muid tehnovõrke. Mäeeraldisel ei asu ka kaitsealuseid taimi ja loomi. Ülevaade mäeeraldise seisundist on esitatud fotodel 1–10 (seisuga 2026 aprill; fotod teinud Ranek Rohtla).

Männikvälja mäeeraldise keskosa geograafilised koordinaadid on: 58°43'51" pl ja 26°19'06" ip (Eesti baaskaart, leht 6432 ja 6434).



Foto 1. Männikvälja karjääri kesk-põhja-lääneosa kaeveala vaatega edela suunas.



Foto 2. Männikvälja karjääri kesk-lõuna-edelaosa kaeveala vaatega lõuna suunas.



Foto 3. Männikvälja karjääri kesk-ida-kaguosa kaeveala vaatega kagu suunas.



Foto 4. Männikvälja karjääri kesk-ida-põhjaosa kaeveala vaatega kirde suunas.



Foto 5. Männikvälja karjääri kesk-lääne-põhjaosa kaeveala vaatega põhja suunas.



Foto 6. Männikvälja karjääri kesk-lääne-põhjaosa kaeveala vaatega loode suunas.



Foto 7. Männikvälja karjääri kesk-lääne-lõunaosa kaeveala vaatega edela suunas.



Foto 8. Männikvälja karjääri kesk-ida-lõunaosa kaeveala vaatega ida suunas.



Foto 9. Männikvälja karjääri kesk-lääne-lõuna-idaosa kaeveala vaatega kagu suunas.



Foto 10. Männikvälja karjääri kesk-lääne-põhjaosa kaeveala vaatega põhja suunas.

2.2. Mäeeraldiste geoloogiline iseloomustus

Männikvälja liivamaardla varu, mis jääb Männikvälja liivakarjääri mäeeraldise piiridesse, on kinnitatud 2011. a geoloogilise uuringu põhjal (Grünberg R., 2011; EGF 8325).

Maastikuliselt on tegemist liustikujõetekkeline laugete nõlvadega mõhnastikuga, millel maapinna suhtelised kõrgused ulatuvad 11 meetrini. Absoluutsed kõrgused maardlal on vahemikus 83...94 m. Karjäärialala piires on maapinna absoluutne kõrgus vahemikus 85...94 m.

Geoloogilise uuringu (Grünberg, 2011) andmetel eristub mäeeraldise geoloogilises läbilõikes kaks eriilmelist settekompleksi. Läbilõike ülemises osas levib liustikujõelise tekkega kruusa lasund, milles sisaldub üle 5 mm fraktsiooni keskmiselt 42,3%. Selle lamamiks on väga peene- kuni keskmiseteralise, kohati savikaid läätsi sisaldavast liiva lasund, milles sisaldub üle 5 mm läbimõõduga fraktsiooni kuni 23,7%. Lasundite paksused on rajatud puuraukude andmetel vastavalt 2,9 m ja 4,8 m (interpoleeritud paksused). Liustikujõelise tekkega settekompleks lasub rähksel liivsavimoreenil. Kattekihiks on keskmiselt 0,4 m paksune liivaseguse mulla kiht.

Maardlal levib liustikujõesetete veekiht, mis teadaolevalt on suure veeandvusega. Veepidemeks on liivsavimoreen. Vesi on vabapinnaline, veetase asub 81,7...84,2 m (**keskmiselt 82,8 m**) absoluutsel kõrgusel. Veeküllastunud on keskmiselt 2,4 m tarbevaru lasund. Veekihti drenib *ca* 2 kilomeetri kaugusel lõunas voolav Voore oja, mis *ca* 3,5 km kaugusel idas suubub Kunda jõkke. Seisuga 24.07.2024 oli karjääri põhjas oleva veekogu veetase 82,06 m absoluutkõrgusel. Seisuga 14.04.2026 oli karjääri põhjas oleva veekogu veetase 82,20 m absoluutkõrgusel.

3. MARKŠEIDERIMÕÕDISTUS

Topogeodeetilise mõõdistamise välitööd on tehtud 2026. aasta 14. aprillil GPS RTK liikuvjaama Spectra SP100 abil, mille mõõdistamise plaaniline täpsus on horisontaalselt koordinaatide määramisel $\pm 5\text{mm} + 0,5\text{ppm}$, kõrguslikult $\pm 10\text{mm} + 1\text{ppm}$. GPS tööjaama lubatud maksimaalne vahemaa püsijaamast on tehniliste tingimuste järgi 35 km. Töö on teostatud L'EST 97 koordinaatide süsteemis, kõrgused on arvatatud EH2000 süsteemis. Koordinaadid on seotud riikliku geodeetilise põhivõrguga GPS püsijaamade võrgu GeoNet vahendusel. Nimetatud püsivõrgu haldaja on Geosoft OÜ. Mõõdistamisel kasutati Spectra SP85 liikuvjaama komplektis väliarvutit MobileMapper6. Liikuvjaam on enne ja pärast mõõdistust kontrollitud riiklikul tihendusvõrgu punktil PALASI97 (ID 62711; X=6568829,652, Y=655479,487, Z=79,650(EH2000)). GNSS vastuvõtuseadmega mõõdetud geodeetilise punkti koordinaadid olid enne mõõdistamise alustamist: X=6568829,658 (erinevus 0,006); Y=655479,502 (erinevus 0,015); Z=79,635 (erinevus 0,015) ja peale mõõdistamise lõpetamist: X=6568829,650 (erinevus 0,002); Y=655479,507 (erinevus 0,020); Z=79,643 (erinevus 0,007). Geodeetilise punkti mõõtmistulemuste erinevus geodeetiliste punktide andmekogus esitatud koordinaatidest vastab seadme tehnilises spetsifikatsioonis toodud täpsusandmetele ning jääb maapõueseaduses toodud lubatud erinevuste piiridesse

(Vastavalt 10.05.2019. a määrusele nr 32 „Markšeiderimõõdistuse täpsustatud nõuded ja kord” §1 (4) ei või GNSS-i vastuvõtuseadmega mõõdetud koordinaatide erinevus geodeetiliste punktide andmekogus esitatud koordinaatidest kontrollmõõtmisel ületada horisontaalselt 3 cm ($\Delta H < 0,030$ m) ja kõrguslikult 7 cm ($\Delta V < 0,070$ m)). Plaani koostamisel on kasutatud programmi MapInfo.

Nii eelmine markšeiderimõõdistus kui ka käesolev markšeiderimõõdistus on tehtud Euroopa (EH2000) kõrgussüsteemis.

4. KAEVANDATUD MAAVARA JA JÄÄKVARU ARVUTUS

4.1. Kaevandatud maavara maht

Alates viimasest markšeiderimõõdistusest (seisuga 24.07.2024) on seisuga 14.04.2026. a määraldisel kaevandatud kokku 1,03 hektaril, millest 0,05 ha suurusel alal on kaevandatud ka põhjaveetasemest madalamal. Ajavahemikus 24.07.2024–14.04.2026 on määraldisel kooritud 0,10 ha suurusel alal. Kaevandatud on Männikvälja liivakarjäärist plokkidest 2 ja 3. Joonisel 1 on esitatud 2024. a maapinna reljeefimudel.

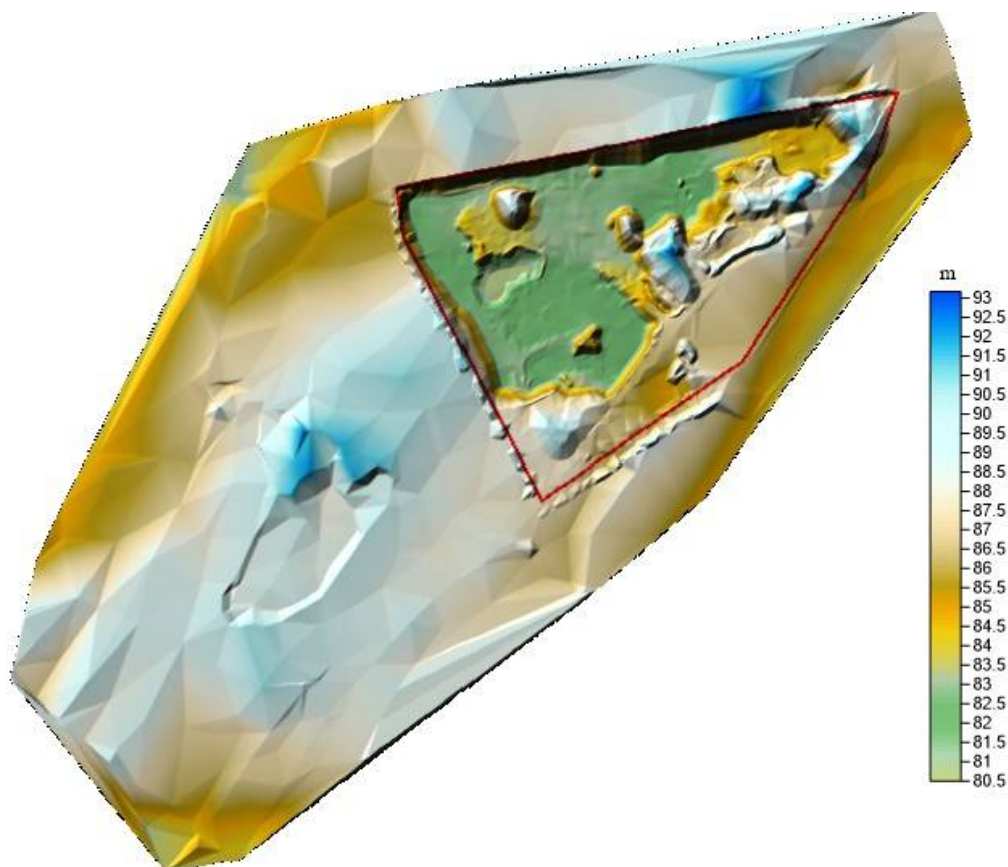
Kaevandatud mahtude väljaselgitamiseks toimiti järgmiselt. **Kaevandatud maavara mahu** arvutused tehti arvutiprogrammiga Surfer 10 (Triangulation with Linear Interpolation meetodil) määraldisel 24.07.2024. a geoloogilise uuringu ajal (Maavarauuringud OÜ) mõõdistatud maapinna mudeli ja 14.04.2026. a mõõdistatud maapinna mudeli vahelises ruumis. Sellest lahutati maha samal ajavahemikul kooritud katendi maht.

Seisuga 14.04.2026 on Männikvälja liivakarjääri määraldisel kooritud katendipuistangutes 10,074 tuh. m³ (lisa 1) katendit (muld). Seisuga 24.07.2024 oli Männikvälja liivakarjääri määraldisel kooritud katendipuistangutes 7,448 tuh. m³ katendit (muld). Seega on ajavahemikus 24.07.2024–14.04.2026 on Männikvälja liivakarjääris määraldiselt kooritud katendi maht 2,626 tuh. m³ (10,074–7,448).

Kahe markšeiderimõõdistuse vahelisel perioodil, **ajavahemikul 24.07.2024–14.04.2026 on Männikvälja liivakarjääri määraldiselt kaevandatud kokku 23,140 tuh. m³ materjali (muld, ehituskruus ja ehitusliiv). Ajavahemikul 24.07.2024–14.04.2026 on Männikvälja liivakarjääri määraldisel kooritud kaetndi (muld) maht 2,626 tuh. m³. Seega on ajavahemikul 24.07.2024–14.04.2026 Männikvälja liivakarjääri määraldiselt kaevandatud kasuliku kihi (ehituskruus ja ehitusliiv) maht kokku 20,514 tuh. m³ (23,140–2,626).**

Plokid 2 ja 3 on arvutatud protsentuaalse suhte alusel ühises ruumis: ehituskruus 38% ja ehitusliiv 62%.

Plokkidest 2 ja 3 on kaevandatud kokku 20,514 tuh. m³ materjali (ehituskruus ja ehitusliiv). Seega on ajavahemikul 24.07.2024–14.04.2026 kaevandatud ehituskruusa aktiivse tarbevaru 2. plokist 7,795 tuh. m³ (20,514*0,38) ehituskruusa ja ehitusliiva aktiivse tarbevaru 3. plokist 12,719 tuh. m³ (20,514*0,62) ehitusliiva.



Joonis 1. Männikvälja liivakarjääri mäeeraldisel (piiritletud punase joonega) ja lähiümbruse reljeef seisuga 14.04.2026. a.

Seisuga 14.04.2026 on Männikvälja liivakarjääri mäeeraldisel laopuistangutes kokku 1,091 tuh. m³ (lisa 3) materjali. Laopuistangute maht on arvestatud kaevandatav mahu hulka.

4.2. Jääkvaru maht

Markšeiderimõõdistuse andmetel (seisuga 24.07.2024) oli mäeeraldisel ehituskruusa aktiivse tarbevaru 2. ploki jääkvaru maht 81,1080 tuh. m³, millest kaevandatav jääkvaru maht 54,1080 tuh. m³. Ehitusliiva aktiivse tarbevaru 3. ploki jääkvaru maht oli 169,6810 tuh. m³, millest kaevandatav jääkvaru maht 138,6810 tuh. m³.

Markšeiderimõõdistuse andmetel (seisuga 14.04.2026) oli mäeeraldisel ehituskruusa aktiivse tarbevaru 2. ploki jääkvaru maht 73,3130 tuh. m³, millest kaevandatav jääkvaru maht 46,3130 tuh. m³. Ehitusliiva aktiivse tarbevaru 3. ploki jääkvaru maht oli 156,9620 tuh. m³, millest kaevandatav jääkvaru maht 125,9620 tuh. m³.

Kaevandaja poolt deklareeritud mahtude alusel (seisuga 31.03.2026; lisa 4) oli mäeeraldisel ehituskruusa aktiivse tarbevaru 2. ploki jääkvaru maht 77,8780 tuh. m³, millest kaevandatav jääkvaru maht 50,8780 tuh. m³. Ehitusliiva aktiivse tarbevaru 3. ploki jääkvaru maht oli 136,5110 tuh. m³, millest kaevandatav jääkvaru maht 105,5110 tuh. m³.

Tabelis 1 on esitatud kokkuvõtvalt käesolevas töös arvatud jääkvaru koguse ja Männikvälja liivakarjääri mäeeraldisel bilansilise (mäeeraldisel detailandmetel seisuga 31.03.2026; lisa 4) koguse võrdlus.

Tabel 1

Plokk, maavara	Jääkvaru seisuga 24.07.2024, tuh. m ³	Kaevandatud maht MS alusel ajavahemikul 24.07.2024- 14.04.2026, tuh. m ³	Jääkvaru seisuga 14.04.2026, tuh. m ³	Bilansiline jääkvaru seisuga 31.03.2026, tuh. m ³	Tegeliku ja bilansilise jääkvaru vahe, tuh. m ³
2 – ehituskruus	81,1080	7,7950	73,3130	77,8780	+4,5650
3 – ehitusliiv	169,6810	12,7190	156,9620	136,5110	-20,4510
KOKKU	250,7890	20,5140	230,2750	214,3890	-15,8860

+ märgiga juurde deklareeritav kogus - märgiga rohkem deklareeritud kogus

5. KOKKUVÕTE

Alates viimasest markseiderimõõdistusest (seisuga 24.07.2024) on seisuga 14.04.2026 Männikvälja liivakarjääri mäeeraldiselt kaevandatud 1,03 hektarilt ehituskruusa aktiivse tarbevaru 2. plokist 7,795 tuh. m³ ehituskruusa ja ehitusliiva aktiivse tarbevaru 3. plokist 12,719 tuh. m³ ehitusliiva. Väljapoole mäeeraldist pindalaliselt ja sügavuti pole kaevandatud.

Kaevandamisega rikutud ala (kaevandamine, katendi koorimine, katendi ladustamine) kogupindala on 4,54 ha. Kasutatud ega kasutuskõlbmatuks muudetud maavaravaru koguseid mäeeraldisel ei ole.

6. KASUTATUD MATERJALID

Eesti Geoloogiakeskus OÜ. Kaevandamise loa taotlus Männikvälja mäeeraldisel, 2012.

Grünberg, R., 2011. Liiva geoloogiline uuring Rägavere vallas Männikvälja laienduse uuringuruumis. (varu seisuga 01.04.2011). Tartu. EGF 8325.

Maapõueseadus (vastu võetud 27.10.2016) § 76 (Markseiderimõõdistus).

Maavarauuringud OÜ. Männikvälja liivakarjääri markseiderimõõdistus seisuga 15.12.2020.

Maavarauuringud OÜ. Männikvälja liivakarjääri markseiderimõõdistus seisuga 24.07.2024.

Majandus- ja taristuministri määrus nr 32 „Markseiderimõõdistuse täpsustatud nõuded ja kord” (RT I, 07.05.2019, 5).

Männikvälja maardla registrikaart nr 411.

Männikvälja liivakarjääri kaevandamise luba nr L.MK/322005.

Arvutiprogramm Surfer raport. Männikvälja liivakarjääri mäeeraldisel katendipuistangutes olev maht seisuga 14.04.2026.

Grid Volume Computations

Upper Surface

Grid File Name:	I:\LEPINGUD III\MÄNNIKVÄLJA LK MS 2026 MOREEN\SURFER
2026\TOPO 2026.grd	
Grid Size:	586 rows x 636 columns
X Minimum:	647342.416
X Maximum:	647977.62
X Spacing:	1.0003212598426
Y Minimum:	6574470.576
Y Maximum:	6575055.301
Y Spacing:	0.99952991452928
Z Minimum:	80.496147446136
Z Maximum:	93.165163066003

Lower Surface

Grid File Name:	I:\LEPINGUD III\MÄNNIKVÄLJA LK MS 2026 MOREEN\SURFER
2026\TOPO 2026 kat.grd	
Grid Size:	586 rows x 636 columns
X Minimum:	647342.42
X Maximum:	647977.62
X Spacing:	1.0003149606298
Y Minimum:	6574470.58
Y Maximum:	6575055.3
Y Spacing:	0.99952136752092
Z Minimum:	80.496031525673
Z Maximum:	93.164812603515

Volumes

Z Scale Factor:	1
-----------------	---

Total Volumes by:

Trapezoidal Rule:	10042.390724815
Simpson's Rule:	10042.212589932
Simpson's 3/8 Rule:	10044.737722603

Cut & Fill Volumes

Positive Volume [Cut]:	10073.716735938 ehk katendipuistangutes olev maht on 10,074 tuh. m ³ .
Negative Volume [Fill]:	31.326011123846
Net Volume [Cut-Fill]:	10042.390724815

Seisuga 14.04.2026 on Männikvälja liivakarjääri mäeeraldisel kooritud katendipuistangutes 10,074 tuh. m³ katendit (muld). Seisuga 24.07.2024 oli Männikvälja liivakarjääri mäeeraldisel kooritud katendipuistangutes 7,448 tuh. m³ katendit (muld). Seega on ajavahemikus 24.07.2024-14.04.2026 on Männikvälja liivakarjääris mäeeraldiselt kooritud katendi maht 2,626 tuh. m³ (10,074-7,448).

Arvutiprogramm Surfer raport. Männikvälja liivakarjääri mäeeraldiselt kaevandatud materjali (ehituskruusa ja ehitusliiva) maht kokku ajavahemikul 24.07.2024–14.04.2026.

Grid Volume Computations

Upper Surface

Grid File Name:	I:\LEPINGUD III\MÄNNIKVÄLJA LK MS 2026 MOREEN\SURFER
2026\out2024.grd	
Grid Size:	586 rows x 636 columns
X Minimum:	647342.42
X Maximum:	647977.62
X Spacing:	1.0003149606298
Y Minimum:	6574470.58
Y Maximum:	6575055.3
Y Spacing:	0.99952136752092
Z Minimum:	80.604362421747
Z Maximum:	92.47413724372

Lower Surface

Grid File Name:	I:\LEPINGUD III\MÄNNIKVÄLJA LK MS 2026 MOREEN\SURFER
2026\out2026.grd	
Grid Size:	586 rows x 636 columns
X Minimum:	647342.42
X Maximum:	647977.62
X Spacing:	1.0003149606298
Y Minimum:	6574470.58
Y Maximum:	6575055.3
Y Spacing:	0.99952136752092
Z Minimum:	80.496031525673
Z Maximum:	92.395905834016

Volumes

Z Scale Factor:	1
-----------------	---

Total Volumes by:

Trapezoidal Rule:	21514.742489207
Simpson's Rule:	21513.991736803
Simpson's 3/8 Rule:	21517.17931165

Cut & Fill Volumes

Positive Volume [Cut]:	23140.254396933 ehk kaevandatud maht on 23,140 tuh. m ³
Negative Volume [Fill]:	1625.5119077262
Net Volume [Cut-Fill]:	21514.742489207

Ajavahemikul 24.07.2024–14.04.2026 on Männikvälja liivakarjääri mäeeraldiselt kaevandatud kokku 23,140 tuh. m³ materjali (muld, ehituskruus ja ehitusliiv). Ajavahemikul 24.07.2024–14.04.2026 on Männikvälja liivakarjääri mäeeraldisel kooritud kaetndi (muld) maht 2,626 tuh. m³. Seega on ajavahemikul 24.07.2024–14.04.2026 Männikvälja liivakarjääri mäeeraldiselt kaevandatud kasuliku kihi (ehituskruus ja ehitusliiv) maht kokku 20,514 tuh. m³ (23,140-2,626).

Arvutiprogramm Surfer raport. Männikvälja liivakarjääri mäeeraldisel laopuistangutes olev maht seisuga 14.04.2026.

Grid Volume Computations

Upper Surface

Grid File Name:	I:\LEPINGUD III\MÄNNIKVÄLJA LK MS 2026 MOREEN\SURFER
2026\TOPO 2026.grd	
Grid Size:	586 rows x 636 columns
X Minimum:	647342.416
X Maximum:	647977.62
X Spacing:	1.0003212598426
Y Minimum:	6574470.576
Y Maximum:	6575055.301
Y Spacing:	0.99952991452928
Z Minimum:	80.496147446136
Z Maximum:	93.165163066003

Lower Surface

Grid File Name:	I:\LEPINGUD III\MÄNNIKVÄLJA LK MS 2026 MOREEN\SURFER
2026\TOPO 2026 lad.grd	
Grid Size:	586 rows x 636 columns
X Minimum:	647342.42
X Maximum:	647977.62
X Spacing:	1.0003149606298
Y Minimum:	6574470.58
Y Maximum:	6575055.3
Y Spacing:	0.99952136752092
Z Minimum:	80.496031525673
Z Maximum:	93.164812603515

Volumes

Z Scale Factor:	1
-----------------	---

Total Volumes by:

Trapezoidal Rule:	1090.9010871078
Simpson's Rule:	1090.5240389795
Simpson's 3/8 Rule:	1092.3862248597

Cut & Fill Volumes

Positive Volume [Cut]:	1143.7754817509
Negative Volume [Fill]:	52.874394643086
Net Volume [Cut-Fill]:	1090.9010871078 ehk laopuistangute maht kokku on 1,091 tuh. m ³

Mäeeraldise detailandmed

Kood 1075

Nimetus Männikvälja liivakarjäär

Maardla 411 - Männikvälja

Seisund aktiivne

Asukoht Lääne-Viru maakond Vinni vald

Kaevandamisloa number L.MK/322005

Kaevandamisloa kehtivus 19.07.2012 - 19.07.2027

Kaevandamisloa omaja OÜ Moreen

Maavara kasutamise eesmärk teedeehitus, ehitus

Korrastamissuund veekogu

Mäeeraldise varu loa vormil ehitusliiv 225 tuh m3; ehituskruus 138 tuh m3

Kasutusala	Max kogus aastas	Kaevandatav varu loa vormil
ehituskruus	-	111
ehitusliiv	-	194

Plokid

Registrikaart	Ploki nimi	Kasutusala	Uringuviis	Ploki liik	Jääkvaru kogus
411	2 plokk	ehituskruus	2005. a määrus nr 44	aT	77.878
411	3 plokk	ehitusliiv	2005. a määrus nr 44	aT	136.511

Lisa 5. Männikvälja liivakarjääri mõõdistuspunktid seisuga 14.04.2026

1	6574968,577	647642,640	90,296	53	6574553,659	647578,093	87,916
2	6574995,554	647627,414	90,356	54	6574556,472	647546,151	87,726
3	6574986,286	647596,630	86,166	55	6574558,624	647542,013	87,826
4	6574955,006	647611,525	86,916	56	6574550,514	647537,379	87,476
5	6574722,638	647677,892	87,716	57	6574544,721	647548,137	87,346
6	6574762,856	647657,370	87,976	58	6574574,678	647536,386	88,156
7	6574789,833	647642,805	89,396	59	6574578,319	647528,111	88,676
8	6574813,500	647629,896	90,336	60	6574580,470	647526,125	89,346
9	6574833,526	647619,469	90,056	61	6574593,876	647537,710	89,646
10	6574865,468	647602,091	87,686	62	6574593,545	647539,365	89,146
11	6574921,739	647571,970	85,406	63	6574601,324	647547,806	88,976
12	6574946,234	647558,564	87,386	64	6574602,979	647547,310	89,406
13	6574973,211	647546,482	84,986	65	6574612,578	647562,701	88,696
14	6574985,624	647576,438	84,036	66	6574624,660	647578,259	88,696
15	6574956,992	647576,935	87,096	67	6574611,420	647555,916	88,906
16	6574940,938	647549,627	87,546	68	6574599,669	647537,545	89,586
17	6574947,062	647537,048	86,326	69	6574599,503	647537,545	89,916
18	6574949,379	647538,869	85,826	70	6574575,174	647588,355	88,336
19	6574950,206	647534,731	84,816	71	6574595,697	647599,278	88,706
20	6574946,896	647532,414	85,326	72	6574613,240	647611,194	87,976
21	6574960,467	647520,001	83,896	73	6574636,742	647628,407	87,836
22	6574945,076	647527,780	84,906	74	6574654,120	647660,183	87,446
23	6574906,348	647545,324	85,296	75	6574566,071	647515,533	87,996
24	6574874,736	647559,391	86,036	76	6574554,155	647520,498	87,146
25	6574843,622	647574,287	88,096	77	6574530,157	647525,298	86,646
26	6574822,437	647587,362	89,956	78	6574503,180	647509,575	84,616
27	6574802,411	647599,940	90,936	79	6574491,595	647502,624	84,176
28	6574780,565	647614,008	90,256	80	6574479,678	647496,831	83,986
29	6574751,105	647630,062	88,386	81	6574486,298	647484,087	84,286
30	6574722,142	647649,260	87,806	82	6574493,084	647464,061	83,906
31	6574700,792	647663,328	88,056	83	6574496,560	647468,530	84,286
32	6574691,027	647665,645	88,226	84	6574470,576	647445,856	83,456
33	6574680,600	647654,225	88,316	85	6574506,159	647476,805	85,236
34	6574669,842	647639,826	88,066	86	6574533,964	647494,348	86,816
35	6574656,437	647623,110	88,246	87	6574547,700	647502,292	87,106
36	6574640,714	647607,388	89,176	88	6574565,078	647497,989	87,116
37	6574627,473	647595,637	88,776	89	6574540,418	647484,418	86,286
38	6574612,578	647582,893	88,666	90	6574516,255	647471,509	85,336
39	6574600,000	647571,970	88,376	91	6574506,490	647465,054	84,666
40	6574587,256	647560,715	88,276	92	6574516,751	647451,152	85,896
41	6574577,491	647552,771	88,256	93	6574509,304	647445,690	84,806
42	6574570,375	647548,303	88,086	94	6574500,366	647432,615	83,206
43	6574569,547	647552,771	88,026	95	6574529,330	647428,643	87,516
44	6574574,347	647556,743	88,046	96	6574545,549	647410,603	90,056
45	6574578,981	647564,356	88,106	97	6574552,335	647414,079	88,856
46	6574566,402	647551,116	87,956	98	6574552,335	647414,079	88,846
47	6574561,768	647555,916	87,886	99	6574558,955	647392,729	87,936
48	6574548,528	647578,921	87,856	100	6574568,057	647378,992	88,806
49	6574548,693	647579,086	88,426	101	6574573,023	647375,682	88,806
50	6574548,859	647575,776	87,826	102	6574586,097	647359,463	86,666
51	6574551,673	647569,156	87,806	103	6574606,620	647344,402	87,946
52	6574552,997	647567,336	87,826	104	6574598,841	647342,416	88,916

105 6574622,177 647358,635 88,946
 106 6574638,728 647351,518 89,256
 107 6574611,420 647374,523 87,146
 108 6574598,345 647394,880 90,006
 109 6574586,263 647409,279 88,206
 110 6574573,519 647432,615 88,856
 111 6574568,554 647458,930 87,066
 112 6574563,920 647476,970 86,916
 113 6574577,326 647493,852 88,036
 114 6574597,352 647510,899 90,806
 115 6574610,592 647479,949 88,856
 116 6574624,494 647457,110 88,856
 117 6574636,576 647426,823 88,896
 118 6574640,052 647416,230 88,756
 119 6574646,837 647399,846 88,076
 120 6574653,789 647386,771 88,806
 121 6574653,623 647386,771 88,806
 122 6574643,527 647352,015 88,956
 123 6574676,132 647356,152 85,206
 124 6574693,178 647363,600 85,336
 125 6574692,351 647373,199 84,966
 126 6574704,102 647380,813 85,056
 127 6574713,866 647372,041 84,576
 128 6574705,757 647390,081 85,426
 129 6574690,861 647410,603 86,056
 130 6574679,442 647435,429 88,726
 131 6574664,381 647468,364 88,536
 132 6574655,940 647482,598 89,546
 133 6574664,877 647488,390 89,166
 134 6574665,208 647492,859 88,936
 135 6574662,726 647492,859 88,396
 136 6574660,243 647488,059 88,066
 137 6574651,471 647487,894 88,466
 138 6574647,003 647487,728 88,586
 139 6574645,844 647482,598 89,816
 140 6574637,900 647487,894 90,056
 141 6574636,742 647496,500 90,656
 142 6574638,893 647504,444 90,676
 143 6574636,907 647511,064 90,776
 144 6574639,886 647521,160 90,056
 145 6574646,672 647519,505 88,366
 146 6574647,499 647508,582 88,456
 147 6574648,658 647502,624 88,786
 148 6574641,045 647491,700 88,736
 149 6574646,506 647488,059 88,826
 150 6574650,644 647503,948 88,566
 151 6574661,898 647513,878 88,996
 152 6574651,637 647531,918 88,946
 153 6574648,327 647534,731 90,366
 154 6574615,226 647522,484 90,426
 155 6574638,562 647547,641 89,366
 156 6574648,161 647565,184 89,026
 157 6574663,057 647588,686 88,486
 158 6574681,262 647611,691 88,236

159 6574691,689 647622,117 87,936
 160 6574718,832 647591,830 89,616
 161 6574698,475 647575,942 89,936
 162 6574700,792 647571,308 88,276
 163 6574676,794 647553,433 88,496
 164 6574671,994 647558,895 90,036
 165 6574656,933 647548,468 89,846
 166 6574660,905 647546,317 88,346
 167 6574675,801 647543,503 88,346
 168 6574681,759 647524,470 88,846
 169 6574694,668 647506,430 88,566
 170 6574671,994 647497,327 88,466
 171 6574674,973 647494,348 89,286
 172 6574696,158 647503,451 89,396
 173 6574708,901 647511,395 90,166
 174 6574708,901 647526,953 89,046
 175 6574717,011 647530,428 90,336
 176 6574724,293 647527,615 91,796
 177 6574732,568 647531,918 91,856
 178 6574739,189 647539,034 92,496
 179 6574742,995 647550,620 90,556
 180 6574746,636 647555,750 90,466
 181 6574750,112 647555,750 90,166
 182 6574746,636 647562,370 91,826
 183 6574738,527 647567,832 91,976
 184 6574732,568 647567,501 90,986
 185 6574724,624 647563,032 89,496
 186 6574722,638 647560,715 88,266
 187 6574722,638 647560,715 88,256
 188 6574730,417 647553,268 88,066
 189 6574724,459 647543,999 88,376
 190 6574719,163 647546,979 88,096
 191 6574707,908 647546,648 88,096
 192 6574707,908 647537,710 89,206
 193 6574694,172 647546,151 88,336
 194 6574715,025 647568,660 88,406
 195 6574724,624 647581,238 89,246
 196 6574728,596 647593,320 89,206
 197 6574738,527 647588,851 89,066
 198 6574738,196 647584,051 88,886
 199 6574731,079 647577,928 89,066
 200 6574734,885 647571,804 91,856
 201 6574740,678 647579,417 91,296
 202 6574743,823 647584,382 91,456
 203 6574743,823 647584,382 91,666
 204 6574740,513 647591,334 90,976
 205 6574736,044 647594,644 90,336
 206 6574717,508 647599,278 89,096
 207 6574686,558 647598,450 88,556
 208 6574733,727 647573,625 91,136
 209 6574750,939 647572,963 91,406
 210 6574756,898 647559,391 91,826
 211 6574766,166 647545,986 91,356
 212 6574765,669 647539,200 91,596

213 6574764,842 647534,731 92,536
 214 6574745,478 647528,939 91,696
 215 6574737,203 647516,360 90,506
 216 6574721,645 647508,085 89,696
 217 6574730,913 647512,554 89,916
 218 6574724,955 647518,512 90,966
 219 6574731,079 647488,556 88,816
 220 6574693,178 647473,495 88,006
 221 6574697,482 647468,364 88,006
 222 6574715,356 647452,807 86,996
 223 6574730,748 647426,161 85,756
 224 6574737,865 647406,135 85,616
 225 6574749,119 647396,701 84,596
 226 6574745,809 647440,228 85,996
 227 6574742,499 647461,910 86,266
 228 6574740,678 647465,716 86,856
 229 6574750,112 647487,066 87,856
 230 6574755,077 647504,113 88,366
 231 6574755,077 647504,279 88,886
 232 6574765,504 647488,721 87,866
 233 6574770,800 647485,080 87,686
 234 6574766,662 647482,267 87,536
 235 6574771,958 647474,157 87,786
 236 6574488,285 647467,868 85,676
 237 6574778,910 647476,970 89,366
 238 6574780,565 647478,625 88,306
 239 6574783,378 647472,667 87,096
 240 6574776,261 647489,714 87,936
 241 6574789,502 647486,735 87,496
 242 6574784,040 647495,010 88,086
 243 6574795,294 647481,439 86,386
 244 6574795,460 647486,073 86,776
 245 6574799,598 647494,679 87,676
 246 6574791,653 647497,658 87,836
 247 6574784,868 647507,589 88,426
 248 6574777,255 647505,603 87,896
 249 6574782,551 647513,381 88,626
 250 6574779,737 647513,547 88,736
 251 6574779,241 647511,395 88,676
 252 6574778,744 647523,312 88,946
 253 6574774,606 647519,670 88,766
 254 6574775,434 647519,836 88,376
 255 6574770,303 647517,519 88,676
 256 6574778,413 647524,470 88,976
 257 6574705,922 647389,915 85,426
 258 6574790,329 647537,048 89,446
 259 6574791,157 647539,200 89,706
 260 6574780,730 647555,254 90,496
 261 6574755,408 647596,630 90,796
 262 6574747,133 647625,427 88,366
 263 6574778,082 647585,541 90,286
 264 6574805,225 647563,860 90,486
 265 6574827,568 647549,461 88,516
 266 6574849,911 647534,235 87,166

267 6574876,722 647522,484 85,306
 268 6574897,245 647506,430 86,086
 269 6574906,017 647505,437 85,996
 270 6574919,091 647503,782 84,816
 271 6574940,441 647502,127 83,636
 272 6574959,971 647501,299 83,536
 273 6574958,481 647492,197 83,286
 274 6574946,069 647489,880 83,046
 275 6574935,807 647489,383 82,966
 276 6574928,691 647487,397 82,906
 277 6574925,546 647475,481 82,826
 278 6574913,630 647482,101 83,906
 279 6574913,133 647482,763 83,846
 280 6574911,313 647484,749 84,576
 281 6574917,933 647500,637 85,256
 282 6574919,919 647500,141 84,316
 283 6574922,071 647491,038 82,936
 284 6574917,933 647492,362 83,676
 285 6574915,119 647493,686 84,916
 286 6574911,644 647505,934 85,536
 287 6574911,809 647507,092 86,016
 288 6574926,539 647505,603 84,706
 289 6574885,991 647494,679 86,036
 290 6574891,121 647477,136 85,066
 291 6574879,039 647469,688 85,076
 292 6574859,841 647458,765 85,686
 293 6574847,263 647481,439 85,766
 294 6574824,423 647476,474 87,166
 295 6574805,556 647469,523 87,346
 296 6574794,632 647468,695 87,066
 297 6574796,784 647457,937 86,696
 298 6574786,357 647470,681 86,686
 299 6574785,199 647472,998 87,456
 300 6574774,937 647467,702 86,826
 301 6574797,280 647480,446 87,176
 302 6574813,334 647523,477 88,016
 303 6574836,008 647517,188 87,156
 304 6574815,817 647539,200 88,476
 305 6574796,618 647558,233 90,216
 306 6574782,551 647621,124 90,206
 307 6574782,551 647621,124 90,196
 308 6574782,551 647621,124 90,206
 309 6574746,305 647585,375 91,436
 310 6574742,002 647592,823 91,086
 311 6574736,706 647599,940 90,066
 312 6574725,783 647611,856 88,756
 313 6574708,405 647632,710 88,166
 314 6574698,640 647648,764 88,216
 315 6574695,496 647659,687 88,286
 316 6574696,158 647666,803 88,126
 317 6574699,799 647674,417 87,936
 318 6574713,370 647686,167 87,616
 319 6574895,921 647852,002 88,816
 320 6574909,989 647863,919 89,506

321 6574917,933 647867,560 87,286
 322 6574893,769 647855,975 87,736
 323 6574900,224 647864,912 87,386
 324 6574908,499 647871,035 87,176
 325 6574919,257 647876,994 87,276
 326 6574910,651 647885,103 85,886
 327 6574899,727 647885,103 85,576
 328 6574909,989 647899,171 85,176
 329 6574919,753 647910,591 85,016
 330 6574923,064 647908,936 85,216
 331 6574927,532 647905,460 85,296
 332 6574930,842 647924,493 84,696
 333 6574938,124 647919,197 84,766
 334 6574946,400 647907,446 86,116
 335 6574958,150 647916,880 85,986
 336 6574972,053 647920,687 86,586
 337 6575004,988 647912,577 87,506
 338 6575003,333 647943,195 86,286
 339 6574985,459 647955,939 85,366
 340 6574974,701 647941,375 85,396
 341 6574959,474 647933,099 85,096
 342 6574950,868 647928,465 84,776
 343 6574940,772 647936,409 84,486
 344 6574953,682 647942,533 84,476
 345 6574959,640 647962,228 84,876
 346 6574973,211 647966,035 84,836
 347 6574970,894 647977,620 85,326
 348 6574979,169 647973,151 85,086
 349 6574999,195 647969,014 85,976
 350 6575014,918 647965,373 87,226
 351 6575038,585 647956,766 87,786
 352 6575055,301 647949,981 88,026
 353 6575042,557 647920,687 88,136
 354 6575025,014 647925,486 87,156
 355 6575017,401 647908,439 88,046
 356 6574999,526 647924,990 86,836
 357 6575023,855 647902,316 88,706
 358 6575037,923 647891,227 90,696
 359 6575028,821 647877,490 90,186
 360 6575004,160 647890,234 85,936
 361 6575001,347 647876,001 86,636
 362 6575020,049 647869,049 89,636
 363 6575013,925 647856,140 90,506
 364 6574993,237 647859,450 88,396
 365 6574991,582 647850,844 90,086
 366 6574988,934 647831,480 93,206
 367 6575002,671 647831,976 92,576
 368 6575002,340 647831,976 92,276
 369 6575004,988 647819,564 92,086
 370 6574986,286 647822,046 92,626
 371 6575000,850 647803,675 90,506
 372 6574994,396 647789,773 89,826
 373 6574980,162 647798,545 89,516
 374 6574975,032 647798,379 89,746

375 6574930,346 647909,763 85,086
 376 6574944,910 647957,097 84,336
 377 6574928,691 647940,216 83,836
 378 6574908,996 647913,570 84,586
 379 6574894,266 647915,390 83,946
 380 6574869,771 647899,502 83,576
 381 6574848,752 647874,842 84,096
 382 6574835,181 647879,145 83,286
 383 6574820,948 647864,250 83,706
 384 6574795,460 647840,583 84,446
 385 6574777,420 647830,652 84,796
 386 6574749,284 647816,254 84,706
 387 6574727,438 647803,013 84,696
 388 6574718,335 647788,945 85,326
 389 6574699,468 647766,602 85,886
 390 6574681,593 647744,590 86,446
 391 6574663,388 647730,191 86,996
 392 6574669,346 647712,648 86,286
 393 6574666,201 647722,082 87,386
 394 6574663,884 647721,089 88,686
 395 6574661,898 647724,730 88,556
 396 6574662,560 647716,620 87,316
 397 6574671,332 647693,284 86,456
 398 6574684,241 647685,505 86,676
 399 6574690,530 647691,298 86,806
 400 6574697,647 647685,836 87,386
 401 6574694,999 647675,741 87,986
 402 6574690,530 647676,403 87,826
 403 6574685,400 647684,843 87,186
 404 6574691,027 647686,002 88,486
 405 6574700,792 647710,000 86,206
 406 6574700,626 647725,392 87,516
 407 6574721,976 647720,758 86,476
 408 6574728,265 647743,928 88,016
 409 6574742,333 647754,521 88,026
 410 6574772,124 647794,738 87,436
 411 6574893,438 647892,054 85,126
 412 6574991,251 647771,899 89,146
 413 6575013,925 647765,940 90,406
 414 6575002,836 647732,343 88,536
 415 6574976,190 647743,432 88,036
 416 6574969,239 647704,042 87,756
 417 6575002,340 647694,112 88,496
 418 6574997,706 647659,521 88,546
 419 6574960,633 647674,582 87,926
 420 6574999,526 647924,990 86,846
 421 6574945,076 647957,097 84,346
 422 6574878,377 647787,787 88,056
 423 6574869,937 647793,414 87,546
 424 6574865,137 647795,897 87,316
 425 6574860,007 647794,904 87,376
 426 6574855,041 647790,931 87,256
 427 6574880,363 647779,015 91,986
 428 6574878,874 647777,360 91,936

429 6574873,247 647781,498 91,276
 430 6574874,571 647783,484 91,326
 431 6574869,771 647786,794 90,956
 432 6574867,454 647785,304 90,806
 433 6574864,641 647787,787 90,716
 434 6574831,540 647783,980 86,566
 435 6574831,209 647788,118 86,496
 436 6574825,582 647793,580 86,546
 437 6574818,796 647794,904 86,776
 438 6574814,162 647790,931 86,856
 439 6574817,968 647789,938 89,096
 440 6574820,782 647791,924 88,756
 441 6574823,761 647789,773 89,306
 442 6574821,941 647787,787 88,866
 443 6574823,430 647784,477 89,106
 444 6574826,409 647784,477 89,476
 445 6574826,409 647786,132 89,436
 446 6574828,064 647781,498 86,676
 447 6574821,775 647779,346 86,206
 448 6574819,955 647784,973 86,326
 449 6574818,134 647786,297 86,416
 450 6574784,371 647805,661 87,116
 451 6574778,910 647797,221 87,646
 452 6574778,082 647792,421 87,986
 453 6574776,758 647788,780 88,056
 454 6574774,606 647783,484 88,236
 455 6574771,627 647780,339 88,196
 456 6574767,821 647776,698 88,366
 457 6574761,201 647768,092 88,666
 458 6574758,056 647761,637 88,766
 459 6574753,091 647753,528 88,146
 460 6574747,298 647746,245 87,236
 461 6574742,830 647740,618 86,886
 462 6574737,368 647733,336 86,706
 463 6574733,561 647726,716 86,716
 464 6574728,927 647719,268 86,836
 465 6574723,797 647711,655 87,056
 466 6574717,177 647702,056 87,146
 467 6574713,535 647696,594 87,336
 468 6574710,722 647691,629 87,416
 469 6574712,873 647689,147 87,516
 470 6574720,652 647699,242 87,286
 471 6574728,265 647709,007 87,196
 472 6574735,547 647718,937 87,026
 473 6574739,685 647725,061 86,766
 474 6574740,016 647724,895 86,656
 475 6574745,974 647734,991 86,416
 476 6574746,305 647735,157 86,076
 477 6574752,098 647743,597 85,886
 478 6574751,601 647743,928 86,356
 479 6574759,546 647753,859 86,656
 480 6574759,877 647753,859 86,326
 481 6574765,835 647762,134 86,456
 482 6574772,786 647772,230 86,346

483 6574779,572 647780,836 86,316
 484 6574784,040 647788,614 86,426
 485 6574788,343 647796,393 86,816
 486 6574788,012 647796,393 87,136
 487 6574791,984 647801,855 87,066
 488 6574791,653 647801,855 87,566
 489 6574795,791 647807,151 87,306
 490 6574795,460 647808,309 87,606
 491 6574795,294 647811,288 87,906
 492 6574793,639 647808,144 88,106
 493 6574792,315 647810,130 88,366
 494 6574789,833 647808,144 89,326
 495 6574791,322 647805,330 88,786
 496 6574788,012 647802,351 89,336
 497 6574786,357 647803,344 89,426
 498 6574782,054 647796,890 89,566
 499 6574783,544 647795,897 89,106
 500 6574780,234 647793,414 89,496
 501 6574781,558 647792,090 89,016
 502 6574779,737 647788,449 88,346
 503 6574777,751 647788,780 88,716
 504 6574776,261 647785,304 88,406
 505 6574777,586 647784,146 88,336
 506 6574775,103 647779,843 88,656
 507 6574773,779 647780,505 88,566
 508 6574771,296 647778,684 89,036
 509 6574771,296 647778,684 89,036
 510 6574772,620 647777,360 88,936
 511 6574767,159 647769,581 89,356
 512 6574762,525 647766,933 89,816
 513 6574764,511 647765,609 89,536
 514 6574761,201 647760,810 89,916
 515 6574759,877 647761,472 89,866
 516 6574755,904 647754,686 89,226
 517 6574750,939 647747,735 88,776
 518 6574747,464 647742,935 88,376
 519 6574742,664 647736,646 88,196
 520 6574740,678 647732,343 87,916
 521 6574739,189 647732,674 88,026
 522 6574736,872 647729,198 88,146
 523 6574737,699 647728,205 88,036
 524 6574734,554 647721,585 87,696
 525 6574730,086 647715,958 87,626
 526 6574724,624 647708,676 87,616
 527 6574719,659 647701,559 87,676
 528 6574714,859 647694,939 87,746
 529 6574712,377 647691,629 87,756
 530 6574748,953 647719,268 87,256
 531 6574749,615 647724,068 86,596
 532 6574753,587 647730,357 85,976
 533 6574760,208 647739,791 86,086
 534 6574766,166 647748,728 86,336
 535 6574772,289 647758,162 86,126
 536 6574779,241 647769,747 85,766

537 6574788,674 647783,484 85,856
 538 6574788,674 647783,318 85,836
 539 6574791,984 647788,945 86,186
 540 6574793,970 647791,759 86,426
 541 6574795,791 647791,924 86,266
 542 6574795,956 647790,104 85,726
 543 6574793,805 647785,801 85,316
 544 6574789,998 647779,181 85,076
 545 6574787,350 647774,547 84,966
 546 6574782,054 647766,768 85,396
 547 6574774,937 647756,010 86,216
 548 6574769,641 647747,569 86,406
 549 6574764,014 647738,632 86,306
 550 6574757,560 647729,033 86,366
 551 6574754,084 647724,233 86,736
 552 6574751,601 647720,923 87,166
 553 6574750,443 647720,592 87,496
 554 6574750,774 647722,909 87,476
 555 6574752,263 647722,578 87,376
 556 6574757,725 647730,688 86,876
 557 6574756,401 647731,847 86,866
 558 6574762,856 647741,280 86,906
 559 6574764,180 647740,784 86,816
 560 6574769,641 647749,390 86,996
 561 6574768,648 647750,548 86,966
 562 6574774,275 647759,155 86,606
 563 6574775,599 647758,658 86,496
 564 6574782,054 647769,085 86,376
 565 6574781,061 647769,912 86,376
 566 6574787,019 647777,195 86,316
 567 6574786,026 647778,188 86,226
 568 6574790,826 647783,484 86,386
 569 6574789,998 647784,311 86,386
 570 6574795,294 647790,600 86,806
 571 6574794,467 647791,262 86,786
 572 6574801,915 647786,132 85,606
 573 6574796,122 647772,064 85,016
 574 6574786,357 647757,500 85,726
 575 6574779,737 647747,238 86,186
 576 6574779,572 647746,576 86,196
 577 6574775,599 647739,129 86,456
 578 6574773,613 647735,157 86,736
 579 6574762,028 647728,040 86,606
 580 6574763,352 647725,723 87,066
 581 6574766,000 647722,744 87,256
 582 6574777,255 647736,315 86,826
 583 6574778,744 647735,322 86,886
 584 6574789,005 647743,597 86,426
 585 6574788,178 647744,921 86,316
 586 6574786,357 647746,907 85,836
 587 6574799,598 647757,831 85,576
 588 6574801,253 647755,679 86,176
 589 6574807,376 647768,919 85,266
 590 6574814,327 647766,437 86,276

591 6574822,106 647774,050 86,306
 592 6574823,099 647773,223 86,516
 593 6574829,885 647779,181 86,796
 594 6574851,069 647796,062 86,836
 595 6574852,062 647795,566 87,176
 596 6574855,207 647792,587 87,306
 597 6574858,848 647798,710 87,296
 598 6574817,306 647785,801 86,416
 599 6574818,631 647781,498 86,146
 600 6574815,486 647778,188 85,796
 601 6574811,845 647776,202 85,456
 602 6574804,066 647783,815 85,426
 603 6574799,267 647788,283 85,716
 604 6574796,949 647791,759 86,216
 605 6574797,115 647794,738 86,576
 606 6574800,922 647798,214 87,006
 607 6574806,880 647798,876 88,046
 608 6574811,679 647796,062 87,236
 609 6574811,017 647785,139 87,426
 610 6574807,873 647781,663 87,056
 611 6574808,204 647788,283 87,066
 612 6574806,714 647783,815 87,616
 613 6574806,549 647791,924 88,216
 614 6574811,348 647789,276 88,416
 615 6574814,327 647788,945 87,246
 616 6574813,169 647786,794 88,226
 617 6574810,024 647779,843 88,466
 618 6574813,996 647782,491 88,716
 619 6574814,989 647783,318 88,806
 620 6574750,277 647709,338 87,766
 621 6574744,981 647710,662 87,796
 622 6574735,216 647703,876 87,686
 623 6574716,349 647691,298 87,516
 624 6574717,839 647689,974 87,616
 625 6574735,216 647714,469 87,326
 626 6574736,872 647713,807 87,486
 627 6574738,030 647712,979 87,576
 628 6574742,664 647722,744 87,036
 629 6574743,657 647727,709 86,596
 630 6574745,147 647726,716 86,716
 631 6574746,636 647725,888 86,716
 632 6574753,587 647739,956 86,076
 633 6574762,359 647755,514 86,336
 634 6574763,849 647754,852 86,396
 635 6574765,504 647753,859 86,286
 636 6574773,282 647768,092 86,176
 637 6574780,730 647781,994 86,216
 638 6574782,220 647781,167 86,186
 639 6574783,709 647780,174 86,166
 640 6574790,660 647794,076 86,816
 641 6574792,150 647793,249 86,836
 642 6574789,667 647795,566 86,796
 643 6574797,611 647807,647 87,356
 644 6574799,101 647806,820 87,456

645 6574800,591 647805,496 87,506
 646 6574808,038 647817,578 87,016
 647 6574817,803 647824,363 86,776
 648 6574816,644 647826,018 86,776
 649 6574815,320 647828,004 86,606
 650 6574826,575 647836,942 86,126
 651 6574827,402 647836,114 86,376
 652 6574828,395 647834,790 86,456
 653 6574829,388 647833,300 86,496
 654 6574841,305 647846,375 85,756
 655 6574841,967 647845,382 86,076
 656 6574842,960 647843,893 86,136
 657 6574844,118 647842,072 86,096
 658 6574859,841 647857,795 85,426
 659 6574860,669 647856,802 85,776
 660 6574861,496 647855,809 85,846
 661 6574862,820 647853,823 85,846
 662 6574873,412 647865,905 85,396
 663 6574874,074 647865,243 85,596
 664 6574874,902 647864,415 85,766
 665 6574876,226 647862,429 85,756
 666 6574883,177 647873,352 85,446
 667 6574884,667 647871,532 85,796
 668 6574886,487 647869,380 85,836
 669 6574895,921 647885,434 85,536
 670 6574897,907 647883,945 85,746
 671 6574899,396 647882,124 85,786
 672 6574894,100 647874,180 86,046
 673 6574889,797 647862,429 86,996
 674 6574891,783 647861,933 86,966
 675 6574893,604 647861,767 87,006
 676 6574890,790 647851,009 88,186
 677 6574889,135 647839,755 88,296
 678 6574885,494 647828,170 87,556
 679 6574878,874 647817,743 87,526
 680 6574868,116 647806,654 87,426
 681 6574866,627 647808,309 87,346
 682 6574869,275 647804,503 87,406
 683 6574752,429 647717,448 87,506
 684 6574749,450 647715,958 87,536
 685 6574747,133 647717,944 87,396
 686 6574746,305 647720,923 87,146
 687 6574742,002 647716,455 87,566
 688 6574743,326 647707,848 87,796
 689 6574885,163 647730,688 83,269
 690 6574874,571 647742,770 83,786
 691 6574868,282 647746,411 84,147
 692 6574869,606 647751,045 83,891
 693 6574860,669 647758,493 84,884
 694 6574852,724 647766,271 85,991
 695 6574841,470 647771,236 86,681
 696 6574841,470 647770,409 87,158
 697 6574837,663 647771,402 86,847
 698 6574838,160 647770,078 87,374

699 6574835,015 647766,768 87,355
 700 6574835,677 647765,940 87,267
 701 6574832,036 647764,782 87,105
 702 6574832,036 647765,278 87,188
 703 6574832,202 647764,451 86,609
 704 6574832,036 647765,940 86,680
 705 6574827,237 647764,120 86,952
 706 6574827,071 647764,451 86,933
 707 6574827,402 647763,458 86,325
 708 6574826,575 647764,782 86,373
 709 6574821,113 647759,982 86,688
 710 6574820,617 647760,479 86,738
 711 6574821,444 647759,817 86,146
 712 6574820,451 647761,141 86,143
 713 6574810,686 647752,866 86,654
 714 6574810,024 647753,693 86,633
 715 6574809,859 647754,190 86,047
 716 6574811,017 647752,700 85,959
 717 6574804,563 647748,728 86,555
 718 6574804,232 647749,059 86,606
 719 6574805,059 647748,562 85,936
 720 6574803,901 647749,721 86,106
 721 6574798,108 647745,087 85,981
 722 6574793,474 647699,242 86,403
 723 6574793,970 647698,911 86,933
 724 6574790,660 647691,795 87,417
 725 6574790,164 647691,960 86,810
 726 6574786,192 647684,347 87,104
 727 6574786,854 647684,181 87,654
 728 6574785,695 647680,375 87,927
 729 6574784,868 647680,375 87,411
 730 6574784,868 647676,403 87,871
 731 6574929,022 647624,600 83,730
 732 6574805,390 647646,446 89,339
 733 6574789,502 647654,887 89,131
 734 6574781,392 647661,342 87,837
 735 6574775,599 647663,328 87,992
 736 6574765,835 647668,790 87,908
 737 6574758,222 647673,258 88,054
 738 6574749,119 647678,058 88,046
 739 6574741,671 647681,699 87,869
 740 6574733,396 647686,829 87,664
 741 6574733,065 647686,829 87,753
 742 6574734,554 647689,478 87,408
 743 6574735,547 647690,967 87,578
 744 6574737,037 647693,284 87,628
 745 6574736,872 647693,615 87,745
 746 6574738,030 647695,436 87,622
 747 6574731,575 647693,615 87,624
 748 6574729,920 647688,319 87,667
 749 6574727,107 647689,147 87,697
 750 6574725,617 647687,657 87,657
 751 6574725,783 647686,167 87,597
 752 6574732,403 647681,368 87,742

753 6574742,002 647675,079 88,212
 754 6574753,422 647668,790 88,107
 755 6574761,201 647665,479 88,119
 756 6574773,779 647657,204 88,209
 757 6574784,206 647651,743 88,517
 758 6574791,819 647647,771 89,236
 759 6574796,949 647645,950 89,560
 760 6574799,929 647645,288 89,574
 761 6574806,218 647640,819 90,105
 762 6574805,390 647638,337 90,183
 763 6574807,542 647636,185 90,188
 764 6574813,831 647634,199 90,124
 765 6574818,631 647633,372 89,950
 766 6574822,106 647633,703 89,891
 767 6574827,402 647631,220 89,914
 768 6574834,353 647626,586 90,192
 769 6574845,111 647619,966 89,587
 770 6574851,897 647615,166 89,198
 771 6574857,358 647610,863 88,698
 772 6574863,813 647607,057 88,044
 773 6574870,433 647604,408 87,428
 774 6574878,874 647598,450 86,790
 775 6574887,646 647594,313 86,022
 776 6574897,576 647591,168 85,772
 777 6574908,003 647588,851 85,838
 778 6574915,781 647588,189 85,842
 779 6574915,781 647588,189 85,847
 780 6574919,753 647588,520 86,569
 781 6574919,753 647588,520 86,569
 782 6574920,581 647590,010 86,636
 783 6574920,912 647591,499 86,619
 784 6574920,746 647592,492 86,707
 785 6574921,243 647592,327 86,411
 786 6574921,574 647595,140 86,288
 787 6574924,553 647595,637 86,458
 788 6574925,877 647593,320 86,527
 789 6574927,863 647592,327 86,492
 790 6574929,022 647592,492 86,566
 791 6574929,187 647592,327 86,769
 792 6574929,187 647590,506 86,774
 793 6574929,022 647590,506 86,621
 794 6574927,036 647589,182 86,782
 795 6574926,870 647589,348 86,658
 796 6574923,726 647590,175 86,627
 797 6574923,891 647589,844 86,830
 798 6574924,719 647592,989 86,387
 799 6574926,208 647595,637 86,233
 800 6574925,712 647593,485 86,468
 801 6574920,250 647595,140 86,938
 802 6574915,947 647595,140 86,950
 803 6574916,112 647592,327 86,494
 804 6574919,091 647591,830 86,518
 805 6574919,753 647590,672 87,230
 806 6574919,091 647589,844 87,128

807 6574912,802 647590,506 87,108
 808 6574912,968 647591,334 87,126
 809 6574912,968 647591,334 87,128
 810 6574913,133 647592,161 86,755
 811 6574913,133 647592,161 86,755
 812 6574910,485 647592,823 86,727
 813 6574910,485 647594,313 86,786
 814 6574905,686 647594,975 86,593
 815 6574905,189 647593,982 86,425
 816 6574902,707 647595,471 86,586
 817 6574902,210 647593,485 87,132
 818 6574901,879 647592,658 87,189
 819 6574892,611 647594,975 87,476
 820 6574893,107 647595,802 87,434
 821 6574893,769 647597,623 86,604
 822 6574882,846 647603,250 86,567
 823 6574880,529 647601,098 87,751
 824 6574880,032 647599,940 87,909
 825 6574871,923 647605,236 88,535
 826 6574872,088 647605,567 88,575
 827 6574873,081 647608,050 87,383
 828 6574865,634 647612,849 87,641
 829 6574862,158 647611,029 89,198
 830 6574861,993 647610,201 89,196
 831 6574855,372 647614,008 89,820
 832 6574856,034 647615,166 89,865
 833 6574858,517 647617,152 88,578
 834 6574854,379 647621,290 88,834
 835 6574852,062 647618,973 90,093
 836 6574851,235 647617,649 90,174
 837 6574845,608 647620,959 90,580
 838 6574846,270 647622,117 90,528
 839 6574847,263 647624,269 89,351
 840 6574841,139 647627,745 89,756
 841 6574839,484 647626,586 90,882
 842 6574838,656 647625,096 90,819
 843 6574832,864 647628,903 90,842
 844 6574834,022 647630,889 90,729
 845 6574834,850 647632,048 89,909
 846 6574827,899 647635,854 89,997
 847 6574826,740 647634,861 91,145
 848 6574826,244 647634,034 91,031
 849 6574821,941 647635,523 90,809
 850 6574822,437 647637,509 90,843
 851 6574822,934 647638,171 90,119
 852 6574815,817 647639,992 90,042
 853 6574815,486 647638,502 90,945
 854 6574814,824 647635,358 90,962
 855 6574807,707 647637,509 91,093
 856 6574808,038 647639,826 90,928
 857 6574809,859 647641,978 90,963
 858 6574809,859 647643,136 90,096
 859 6574800,260 647649,922 89,412
 860 6574799,267 647648,102 90,809

861 6574798,936 647647,108 90,784
 862 6574790,495 647650,584 90,478
 863 6574791,653 647651,908 90,556
 864 6574791,819 647652,901 89,636
 865 6574781,723 647658,363 88,949
 866 6574780,896 647657,701 89,870
 867 6574780,068 647656,211 89,850
 868 6574767,655 647663,493 89,760
 869 6574768,483 647664,321 89,880
 870 6574765,173 647666,969 89,686
 871 6574764,345 647665,810 89,666
 872 6574753,422 647671,272 89,633
 873 6574754,249 647672,927 89,622
 874 6574745,643 647677,561 89,452
 875 6574744,485 647675,906 89,405
 876 6574734,885 647681,699 88,971
 877 6574735,879 647683,188 88,927
 878 6574730,251 647686,498 88,814
 879 6574729,258 647685,340 88,885
 880 6574727,107 647686,498 88,843
 881 6574728,100 647687,491 88,739
 882 6574723,962 647693,284 87,634
 883 6574721,976 647696,760 87,466
 884 6574729,258 647706,028 87,412
 885 6574733,065 647704,207 87,632
 886 6574739,851 647698,911 87,660
 887 6574749,615 647691,464 87,843
 888 6574742,499 647688,484 87,649
 889 6574753,422 647681,699 87,972
 890 6574763,352 647676,403 87,942
 891 6574773,448 647671,107 87,799
 892 6574782,551 647664,983 87,701
 893 6574782,220 647672,431 87,794
 894 6574768,152 647682,361 87,882
 895 6574791,984 647703,545 86,457
 896 6574773,779 647729,364 87,109
 897 6574781,061 647736,315 86,816
 898 6574792,812 647726,219 86,308
 899 6574791,488 647735,488 86,310
 900 6574789,171 647742,108 86,437
 901 6574794,301 647742,935 86,152
 902 6574792,977 647745,583 86,300
 903 6574797,777 647750,217 86,244
 904 6574799,267 647747,900 86,045
 905 6574811,845 647757,665 86,122
 906 6574810,686 647760,313 86,284
 907 6574823,430 647770,574 86,555
 908 6574826,078 647767,595 86,447
 909 6574831,043 647768,588 86,658
 910 6574830,547 647771,733 86,764
 911 6574830,547 647775,871 86,857
 912 6574837,001 647780,836 87,117
 913 6574842,132 647774,878 86,993
 914 6574842,960 647782,987 87,206

915 6574841,967 647784,642 87,210
 916 6574841,305 647786,628 87,068
 917 6574847,759 647791,924 87,195
 918 6574849,249 647790,600 87,281
 919 6574850,738 647788,780 87,243
 920 6574850,573 647785,635 87,131
 921 6574850,573 647785,635 87,132
 922 6574851,400 647784,808 87,672
 923 6574852,393 647784,477 87,734
 924 6574852,393 647784,477 87,739
 925 6574851,235 647781,663 87,007
 926 6574850,904 647782,325 87,731
 927 6574850,242 647783,318 87,633
 928 6574849,911 647784,311 87,100
 929 6574847,428 647782,491 87,051
 930 6574847,925 647781,994 87,718
 931 6574848,752 647781,332 87,674
 932 6574847,097 647778,850 87,686
 933 6574846,104 647779,512 87,777
 934 6574845,608 647779,843 87,090
 935 6574845,442 647775,374 86,851
 936 6574846,270 647775,540 87,231
 937 6574846,766 647775,705 86,790
 938 6574846,766 647772,892 86,649
 939 6574853,055 647766,437 85,985
 940 6574857,358 647763,292 84,634
 941 6574853,883 647768,423 84,464
 942 6574855,207 647769,416 84,385
 943 6574873,578 647764,616 88,486
 944 6574896,252 647775,871 91,776
 945 6574890,625 647779,346 91,620
 946 6574890,128 647776,864 91,879
 947 6574885,163 647777,195 91,779
 948 6574884,832 647776,036 92,476
 949 6574884,336 647775,209 92,461
 950 6574888,639 647773,223 93,118
 951 6574889,797 647774,381 93,168
 952 6574854,545 647775,540 87,312
 953 6574857,524 647772,064 87,373
 954 6574803,735 647741,611 82,541
 955 6574803,073 647739,129 82,470
 956 6574807,376 647735,322 82,252
 957 6574810,355 647731,847 82,196
 958 6574811,348 647730,026 82,289
 959 6574811,017 647727,047 82,289
 960 6574808,204 647723,075 82,446
 961 6574807,542 647721,254 82,646
 962 6574809,362 647717,117 82,479
 963 6574811,679 647714,138 82,569
 964 6574812,010 647710,993 82,576
 965 6574810,024 647708,014 82,516
 966 6574844,449 647661,673 82,383
 967 6574848,918 647662,004 82,442
 968 6574908,499 647636,682 84,270

969 6574894,762 647652,901 83,933
 970 6574898,900 647645,619 84,077
 971 6574903,369 647640,323 84,220
 972 6574925,546 647673,755 88,366
 973 6574919,919 647671,769 89,435
 974 6574916,278 647672,100 89,852
 975 6574913,464 647672,596 89,643
 976 6574912,637 647671,769 89,780
 977 6574913,299 647668,790 89,933
 978 6574917,271 647666,638 89,783
 979 6574922,898 647662,500 88,775
 980 6574924,222 647666,141 88,823
 981 6574924,222 647668,127 88,907
 982 6574920,746 647668,293 89,531
 983 6574917,602 647668,790 89,807
 984 6574915,285 647670,114 89,892
 985 6574872,750 647749,390 83,712
 986 6574867,289 647753,693 84,086
 987 6574863,317 647757,500 84,596
 988 6574860,503 647759,320 85,028
 989 6574857,855 647757,003 85,130
 990 6574866,461 647749,059 84,212
 991 6574872,916 647743,266 83,854
 992 6574878,708 647736,481 83,608
 993 6574928,856 647687,657 82,739
 994 6574816,148 647725,392 82,281
 995 6574929,684 647592,989 86,787
 996 6574931,670 647602,091 86,860
 997 6574934,483 647614,339 87,311
 998 6574936,800 647627,248 87,793
 999 6574938,952 647638,337 88,020
 1000 6574941,103 647647,439 88,007
 1001 6574943,090 647655,218 87,961
 1002 6574947,724 647677,727 87,705
 1003 6574805,059 647790,435 88,216
 1004 6574805,887 647778,022 88,026
 1005 6574804,066 647780,008 87,856
 1006 6574799,929 647779,677 85,156
 1007 6574803,073 647782,656 85,216
 1008 6574801,087 647782,491 85,348
 1009 6574805,556 647773,223 85,242
 1010 6574807,542 647775,209 85,316
 1011 6574803,404 647774,050 85,206
 1012 6574934,318 647731,350 82,711
 1013 6574945,407 647731,681 82,482
 1014 6574946,565 647732,178 82,118
 1015 6574947,393 647732,012 82,049
 1016 6574946,234 647737,805 82,694
 1017 6574947,558 647738,136 82,065
 1018 6574948,220 647738,467 82,003
 1019 6574946,565 647745,252 82,506
 1020 6574947,227 647745,749 82,069
 1021 6574948,386 647745,583 81,988
 1022 6574947,062 647750,879 82,375

1023 6574947,889 647751,211 81,991
 1024 6574948,386 647751,211 82,023
 1025 6574947,889 647756,176 82,341
 1026 6574948,551 647756,176 82,519
 1027 6574948,220 647758,989 82,276
 1028 6574948,386 647759,155 82,253
 1029 6574951,365 647762,299 82,148
 1030 6574954,675 647766,933 82,025
 1031 6574957,488 647773,885 82,372
 1032 6574957,654 647780,670 82,234
 1033 6574958,647 647786,463 82,303
 1034 6574960,302 647860,443 85,049
 1035 6574959,474 647855,147 84,997
 1036 6574959,309 647850,844 84,686
 1037 6574951,199 647800,696 82,674
 1038 6574946,731 647798,048 82,559
 1039 6574952,854 647798,876 82,378
 1040 6574963,281 647833,466 83,725
 1041 6574959,309 647835,287 83,589
 1042 6574961,129 647842,900 84,169
 1043 6574965,598 647842,238 84,210
 1044 6574967,750 647849,023 84,581
 1045 6574964,109 647850,678 84,532
 1046 6574965,102 647857,464 84,938
 1047 6574969,074 647840,914 84,216
 1048 6574966,922 647833,631 83,786
 1049 6574954,344 647783,318 82,173
 1050 6574952,027 647776,202 82,272
 1051 6574950,206 647770,078 82,618
 1052 6574946,731 647764,947 82,425
 1053 6574944,083 647760,148 82,541
 1054 6574942,759 647754,521 82,608
 1055 6574941,269 647748,562 82,629
 1056 6574940,938 647743,101 82,609
 1057 6574940,607 647736,481 82,640
 1058 6574939,779 647730,357 82,535
 1059 6574938,455 647718,772 82,514
 1060 6574928,691 647721,254 82,550
 1061 6574924,719 647723,075 82,668
 1062 6574918,926 647724,895 82,694
 1063 6574914,126 647726,550 82,703
 1064 6574918,429 647732,509 82,852
 1065 6574925,215 647732,012 82,743
 1066 6574931,504 647731,350 82,715
 1067 6574936,635 647731,019 82,564
 1068 6574935,642 647739,129 82,763
 1069 6574930,015 647739,791 82,760
 1070 6574924,719 647739,460 82,763
 1071 6574926,043 647746,742 82,625
 1072 6574931,173 647746,907 82,595
 1073 6574936,138 647746,080 82,691
 1074 6574936,635 647753,362 82,741
 1075 6574930,511 647754,190 82,528
 1076 6574925,712 647755,183 82,406

1077 6574925,712 647755,183 82,403
 1078 6574920,250 647757,665 82,235
 1079 6574912,140 647761,141 82,087
 1080 6574917,436 647767,264 82,106
 1081 6574925,712 647764,947 82,243
 1082 6574933,159 647762,630 82,638
 1083 6574938,124 647761,306 82,603
 1084 6574940,772 647769,581 82,568
 1085 6574935,145 647771,071 82,408
 1086 6574929,849 647772,064 82,401
 1087 6574924,884 647773,223 82,137
 1088 6574927,367 647781,498 82,070
 1089 6574933,821 647780,339 82,189
 1090 6574936,469 647780,174 82,333
 1091 6574939,448 647780,505 82,358
 1092 6574940,607 647782,987 82,290
 1093 6574938,455 647784,808 82,153
 1094 6574935,973 647785,139 82,074
 1095 6574933,821 647783,484 82,098
 1096 6574933,490 647781,994 82,254
 1097 6574935,807 647782,656 83,557
 1098 6574935,807 647781,994 83,494
 1099 6574937,462 647782,822 83,672
 1100 6574937,628 647782,160 83,753
 1101 6574943,421 647776,202 82,422
 1102 6574946,896 647783,153 82,215
 1103 6574941,600 647785,801 82,169
 1104 6574935,476 647787,621 82,134
 1105 6574930,346 647788,945 81,689
 1106 6574937,131 647794,407 82,172
 1107 6574943,255 647792,255 82,188
 1108 6574949,544 647789,938 82,135
 1109 6574947,724 647793,911 82,171
 1110 6574944,579 647798,048 82,532
 1111 6574940,441 647798,545 82,350
 1112 6574937,462 647798,710 82,259
 1113 6574934,152 647797,883 82,179
 1114 6574922,898 647782,491 82,149
 1115 6574919,919 647778,188 82,296
 1116 6574916,774 647773,719 82,383
 1117 6574913,464 647769,912 82,513
 1118 6574909,658 647766,768 82,385
 1119 6574906,679 647763,127 82,458
 1120 6574905,024 647760,148 82,333
 1121 6574903,865 647758,989 82,545
 1122 6574904,031 647757,996 82,448
 1123 6574907,672 647758,162 82,176
 1124 6574911,975 647757,169 82,258
 1125 6574915,616 647754,686 82,306
 1126 6574919,919 647752,038 82,418
 1127 6574921,408 647749,721 82,529
 1128 6574921,574 647746,907 82,691
 1129 6574921,077 647743,432 82,782
 1130 6574920,415 647742,273 82,799

1131 6574918,926 647744,094 84,020
 1132 6574919,588 647745,914 83,845
 1133 6574919,257 647748,066 83,664
 1134 6574918,429 647750,383 83,659
 1135 6574916,609 647751,211 83,496
 1136 6574917,105 647749,059 83,612
 1137 6574917,933 647746,576 83,726
 1138 6574919,257 647740,618 82,833
 1139 6574916,609 647737,143 82,873
 1140 6574913,299 647733,833 82,983
 1141 6574909,823 647732,178 82,877
 1142 6574906,844 647732,509 82,945
 1143 6574905,024 647733,998 82,956
 1144 6574904,031 647736,812 83,095
 1145 6574907,341 647738,632 83,984
 1146 6574909,989 647738,798 84,462
 1147 6574911,809 647739,129 84,559
 1148 6574913,133 647739,294 84,823
 1149 6574911,975 647736,481 84,806
 1150 6574909,989 647735,488 84,973
 1151 6574908,334 647735,653 85,050
 1152 6574907,506 647736,646 84,748
 1153 6574909,161 647737,308 84,765
 1154 6574910,485 647737,639 84,630
 1155 6574901,879 647737,143 83,042
 1156 6574902,210 647739,791 83,824
 1157 6574897,907 647739,129 83,183
 1158 6574894,100 647741,115 83,133
 1159 6574889,963 647744,259 82,941
 1160 6574889,301 647747,900 82,985
 1161 6574889,135 647750,879 83,436
 1162 6574890,459 647753,197 84,114
 1163 6574892,445 647755,679 85,161
 1164 6574890,956 647755,679 85,052
 1165 6574888,804 647753,362 84,088
 1166 6574886,984 647751,707 83,742
 1167 6574885,329 647753,528 84,863
 1168 6574885,660 647754,190 85,140
 1169 6574883,839 647754,852 85,214
 1170 6574883,177 647755,679 85,173
 1171 6574883,343 647756,507 85,375
 1172 6574884,501 647755,845 85,496
 1173 6574886,984 647751,376 83,589
 1174 6574884,998 647750,383 83,105
 1175 6574881,357 647752,369 83,154
 1176 6574879,536 647754,190 83,327
 1177 6574878,377 647756,507 83,323
 1178 6574876,557 647757,996 83,513
 1179 6574875,398 647758,989 83,885
 1180 6574874,571 647757,334 83,604
 1181 6574872,750 647755,017 83,489
 1182 6574870,599 647755,348 83,864
 1183 6574868,778 647757,831 84,119
 1184 6574867,951 647759,320 83,986

1185 6574864,641 647760,975 84,332
 1186 6574861,993 647762,134 84,296
 1187 6574859,179 647762,465 84,575
 1188 6574858,682 647762,134 84,809
 1189 6574860,834 647758,824 84,632
 1190 6574858,020 647760,644 85,305
 1191 6574857,027 647764,285 84,704
 1192 6574856,696 647764,120 84,626
 1193 6574855,207 647763,458 85,598
 1194 6574853,055 647765,113 85,886
 1195 6574853,883 647765,609 85,760
 1196 6574854,876 647766,106 84,833
 1197 6574855,869 647767,595 84,799
 1198 6574853,055 647770,409 84,699
 1199 6574852,393 647769,250 84,955
 1200 6574850,407 647768,257 86,139
 1201 6574848,256 647770,905 86,350
 1202 6574846,766 647773,885 86,670
 1203 6574850,076 647772,892 84,760
 1204 6574851,069 647773,388 84,742
 1205 6574850,573 647774,547 84,949
 1206 6574849,580 647774,712 85,088
 1207 6574849,083 647776,036 85,801
 1208 6574848,090 647776,864 86,934
 1209 6574850,407 647778,188 86,824
 1210 6574849,911 647779,512 86,929
 1211 6574849,083 647780,670 87,375
 1212 6574851,731 647778,022 87,001
 1213 6574854,710 647775,209 87,373
 1214 6574857,855 647771,402 87,099
 1215 6574859,510 647768,423 86,478
 1216 6574861,496 647766,437 86,520
 1217 6574863,648 647765,278 86,556
 1218 6574866,958 647764,451 86,628
 1219 6574869,771 647763,292 86,807
 1220 6574870,433 647761,637 86,278
 1221 6574870,930 647761,637 86,272
 1222 6574870,433 647759,651 85,787
 1223 6574871,261 647759,817 85,822
 1224 6574871,261 647758,327 85,581
 1225 6574871,592 647758,658 85,568
 1226 6574871,426 647763,127 86,556
 1227 6574869,275 647765,113 86,824
 1228 6574866,792 647768,092 86,620
 1229 6574865,965 647768,092 86,692
 1230 6574863,648 647769,581 87,069
 1231 6574863,648 647769,581 87,069
 1232 6574861,496 647771,899 86,919
 1233 6574859,344 647773,885 87,317
 1234 6574856,531 647776,202 87,364
 1235 6574854,379 647779,346 87,230
 1236 6574854,048 647782,987 87,015
 1237 6574854,379 647783,318 87,552
 1238 6574856,200 647780,174 86,639

1239 6574857,027 647781,001 87,425
 1240 6574856,696 647781,001 87,446
 1241 6574860,669 647778,022 87,453
 1242 6574861,331 647778,850 87,928
 1243 6574863,151 647774,381 87,259
 1244 6574863,648 647774,878 87,932
 1245 6574865,965 647771,402 87,084
 1246 6574866,296 647772,064 87,736
 1247 6574867,123 647767,761 87,019
 1248 6574868,447 647767,430 87,310
 1249 6574871,095 647766,768 88,564
 1250 6574874,074 647765,113 88,528
 1251 6574876,888 647765,278 88,906
 1252 6574880,529 647763,954 89,211
 1253 6574882,515 647762,134 89,065
 1254 6574885,163 647760,148 89,012
 1255 6574887,811 647758,824 89,050
 1256 6574888,639 647761,141 89,707
 1257 6574889,963 647759,982 89,186
 1258 6574888,970 647761,968 90,232
 1259 6574889,797 647763,127 90,454
 1260 6574890,790 647763,458 89,189
 1261 6574888,970 647763,789 90,622
 1262 6574888,308 647766,271 91,499
 1263 6574889,135 647768,754 91,676
 1264 6574890,294 647772,064 91,852
 1265 6574892,611 647773,885 91,883
 1266 6574894,928 647775,374 91,637
 1267 6574897,410 647775,540 91,630
 1268 6574899,893 647775,871 91,507
 1269 6574901,548 647775,043 91,072
 1270 6574902,541 647774,547 90,373
 1271 6574903,038 647773,223 89,980
 1272 6574900,886 647773,057 89,938
 1273 6574898,072 647773,554 89,952
 1274 6574894,762 647771,899 89,730
 1275 6574892,114 647769,747 89,709
 1276 6574890,956 647765,940 89,494
 1277 6574890,956 647763,954 89,278
 1278 6574893,604 647764,120 89,068
 1279 6574894,266 647761,141 89,204
 1280 6574897,576 647764,120 89,479
 1281 6574896,252 647767,595 89,602
 1282 6574898,569 647769,085 89,501
 1283 6574899,893 647766,768 89,468
 1284 6574901,383 647769,416 89,545
 1285 6574902,376 647770,905 89,477
 1286 6574903,534 647772,892 89,618
 1287 6574904,527 647777,360 88,362
 1288 6574906,679 647776,864 88,348
 1289 6574907,837 647776,036 88,465
 1290 6574907,672 647775,540 88,027
 1291 6574905,024 647778,353 88,338
 1292 6574900,224 647780,505 88,564

1293 6574894,431 647783,153 88,604
 1294 6574889,466 647784,642 88,504
 1295 6574891,287 647795,731 88,213
 1296 6574886,653 647788,945 88,239
 1297 6574885,329 647783,649 88,447
 1298 6574880,695 647786,628 88,016
 1299 6574884,005 647790,600 88,100
 1300 6574878,543 647793,083 87,654
 1301 6574875,564 647789,938 87,577
 1302 6574870,599 647793,414 87,476
 1303 6574873,412 647796,724 87,511
 1304 6574906,182 647829,494 86,694
 1305 6574871,592 647800,531 87,324
 1306 6574868,282 647794,904 87,314
 1307 6574864,310 647795,897 87,169
 1308 6574860,338 647794,904 87,254
 1309 6574905,520 647837,604 86,833
 1310 6574906,844 647840,252 87,171
 1311 6574907,506 647849,189 87,113
 1312 6574906,348 647851,175 87,378
 1313 6574899,231 647848,858 88,336
 1314 6574910,485 647844,058 87,674
 1315 6574910,982 647846,872 86,868
 1316 6574912,637 647850,678 86,625
 1317 6574911,644 647853,161 87,168
 1318 6574916,609 647857,464 87,313
 1319 6574915,450 647853,657 86,767
 1320 6574916,278 647850,347 86,663
 1321 6574918,429 647848,196 86,907
 1322 6574920,581 647847,203 87,332
 1323 6574920,581 647846,706 87,457
 1324 6574917,767 647846,872 86,862
 1325 6574912,802 647843,727 87,311
 1326 6574916,609 647843,562 87,791
 1327 6574913,133 647840,086 87,092
 1328 6574912,471 647836,280 86,769
 1329 6574913,464 647834,459 86,758
 1330 6574910,982 647831,976 86,728
 1331 6574910,816 647828,004 86,754
 1332 6574913,795 647823,205 86,886
 1333 6574916,609 647819,729 87,252
 1334 6574921,739 647818,240 87,346
 1335 6574926,539 647818,571 87,307
 1336 6574929,684 647820,391 87,386
 1337 6574930,015 647824,363 87,445
 1338 6574930,511 647828,832 87,223
 1339 6574930,677 647833,797 87,077
 1340 6574930,677 647836,611 87,032
 1341 6574932,828 647839,424 87,074
 1342 6574933,159 647842,569 87,245
 1343 6574935,145 647845,879 87,411
 1344 6574936,138 647849,354 88,033
 1345 6574936,304 647853,161 87,797
 1346 6574936,966 647855,975 87,826

1347 6574939,117 647858,623 88,341
 1348 6574940,938 647860,443 88,655
 1349 6574941,600 647862,760 88,640
 1350 6574940,772 647866,236 89,022
 1351 6574939,448 647868,718 89,691
 1352 6574936,138 647870,208 89,588
 1353 6574933,490 647871,035 89,220
 1354 6574930,511 647870,870 89,485
 1355 6574930,180 647868,056 89,380
 1356 6574929,187 647866,401 89,301
 1357 6574926,870 647862,926 88,828
 1358 6574929,022 647860,774 91,916
 1359 6574930,677 647863,422 91,889
 1360 6574932,663 647865,905 91,990
 1361 6574933,821 647867,063 92,031
 1362 6574935,145 647866,567 92,083
 1363 6574936,304 647865,739 92,573
 1364 6574937,297 647863,588 92,215
 1365 6574935,476 647863,919 92,184
 1366 6574933,987 647860,443 91,995
 1367 6574932,166 647860,940 91,993
 1368 6574932,166 647858,292 91,954
 1369 6574930,346 647858,623 92,108
 1370 6574929,022 647859,616 92,018
 1371 6574926,208 647857,795 91,762
 1372 6574923,726 647856,802 91,555
 1373 6574922,733 647855,313 91,533
 1374 6574923,229 647853,988 91,619
 1375 6574925,877 647853,492 91,324
 1376 6574928,194 647853,492 91,284
 1377 6574930,677 647853,492 91,406
 1378 6574931,173 647849,851 90,565
 1379 6574928,360 647849,851 90,034
 1380 6574925,381 647849,685 89,887
 1381 6574924,222 647849,189 89,880
 1382 6574924,719 647845,217 89,320
 1383 6574926,539 647844,058 89,411
 1384 6574928,856 647842,403 89,112
 1385 6574930,677 647841,079 88,998
 1386 6574927,532 647838,431 89,837
 1387 6574924,884 647839,259 90,146
 1388 6574923,064 647841,410 90,090
 1389 6574919,919 647840,417 90,084
 1390 6574918,098 647838,928 90,220
 1391 6574920,912 647836,942 89,789
 1392 6574923,395 647835,452 90,116
 1393 6574925,381 647834,956 90,150
 1394 6574927,532 647834,459 89,823
 1395 6574927,698 647830,156 89,537
 1396 6574924,553 647830,652 89,644
 1397 6574921,243 647830,652 89,205
 1398 6574917,436 647831,645 89,400
 1399 6574917,271 647828,501 89,316
 1400 6574919,919 647827,839 89,533

1401	6574922,898	647827,508	89,551	1455	6574934,814	647877,325	88,784
1402	6574926,705	647826,184	89,351	1456	6574934,152	647877,987	89,417
1403	6574927,367	647823,370	89,388	1457	6574937,793	647881,793	89,345
1404	6574925,215	647822,543	89,597	1458	6574937,462	647882,621	89,771
1405	6574922,236	647822,708	89,879	1459	6574942,096	647886,262	90,491
1406	6574921,243	647823,536	90,043	1460	6574941,434	647886,758	90,691
1407	6574920,084	647823,867	90,008	1461	6574947,393	647891,061	90,872
1408	6574918,264	647825,025	89,995	1462	6574946,731	647891,723	91,315
1409	6574921,574	647825,522	90,417	1463	6574952,523	647895,364	91,016
1410	6574922,402	647816,419	87,248	1464	6574951,861	647896,027	91,360
1411	6574922,236	647817,412	87,335	1465	6574957,488	647899,171	91,387
1412	6574927,201	647816,916	87,157	1466	6574957,157	647899,833	91,493
1413	6574927,201	647817,412	87,334	1467	6574962,453	647902,316	91,316
1414	6574931,504	647820,226	87,094	1468	6574962,122	647902,812	91,380
1415	6574931,008	647820,391	87,415	1469	6574968,412	647906,619	90,307
1416	6574932,166	647827,011	86,975	1470	6574968,412	647907,612	90,646
1417	6574931,835	647827,342	87,236	1471	6574973,542	647909,432	89,874
1418	6574940,276	647852,333	87,053	1472	6574973,542	647910,260	90,005
1419	6574939,945	647852,499	87,669	1473	6574979,500	647911,749	88,927
1420	6574938,621	647855,975	87,302	1474	6574979,169	647912,411	89,374
1421	6574938,124	647855,975	87,780	1475	6574984,962	647915,390	87,545
1422	6574941,269	647857,961	87,566	1476	6574984,962	647915,887	88,004
1423	6574941,269	647858,788	88,380	1477	6574990,258	647918,535	87,034
1424	6574941,765	647860,112	88,751	1478	6574989,762	647919,032	87,300
1425	6574946,069	647840,086	87,211	1479	6574994,727	647921,514	86,793
1426	6574943,255	647840,914	86,899	1480	6574994,230	647922,011	87,188
1427	6574939,117	647836,611	86,844	1481	6574997,706	647923,004	86,793
1428	6574936,304	647828,666	87,129	1482	6574997,871	647923,666	87,068
1429	6574986,452	647885,103	90,229	1483	6574999,030	647923,169	86,905
1430	6574984,300	647885,434	90,136	1484	6574999,857	647923,335	87,086
1431	6574982,314	647887,586	90,119	1485	6574998,037	647919,197	86,920
1432	6574983,307	647890,565	89,935	1486	6574998,533	647919,197	87,479
1433	6574986,948	647890,068	89,881	1487	6574999,361	647918,701	87,632
1434	6574986,783	647893,047	89,519	1488	6575000,354	647919,197	87,775
1435	6574984,300	647896,358	89,731	1489	6575001,678	647918,535	87,500
1436	6574986,948	647898,013	88,736	1490	6575001,843	647915,721	87,500
1437	6574988,934	647901,157	88,976	1491	6575000,685	647917,046	88,377
1438	6574987,114	647903,640	89,706	1492	6575000,023	647917,046	88,593
1439	6574988,438	647906,453	89,496	1493	6574999,195	647913,239	88,675
1440	6574991,417	647907,943	88,902	1494	6574999,857	647913,239	88,821
1441	6574992,244	647911,915	87,871	1495	6575001,016	647912,908	88,079
1442	6574993,568	647916,715	86,948	1496	6574997,706	647913,073	88,143
1443	6574988,934	647912,742	87,803	1497	6574997,044	647913,073	87,730
1444	6574984,631	647909,432	89,125	1498	6574996,547	647908,770	88,190
1445	6574979,997	647906,950	90,265	1499	6574997,209	647908,770	88,481
1446	6574978,838	647902,978	90,662	1500	6574999,030	647908,605	89,597
1447	6574977,514	647898,178	90,536	1501	6575000,188	647908,274	89,533
1448	6574976,852	647893,213	91,653	1502	6575002,340	647905,791	87,532
1449	6574978,342	647890,730	91,448	1503	6574999,526	647904,467	89,559
1450	6574967,419	647899,171	91,013	1504	6574998,368	647904,467	89,654
1451	6574932,497	647872,028	88,939	1505	6574996,713	647904,964	88,405
1452	6574931,504	647871,863	89,237	1506	6574996,216	647904,633	88,186
1453	6574931,670	647873,021	88,761	1507	6574995,389	647899,668	87,832
1454	6574930,842	647873,518	89,065	1508	6574994,561	647899,668	87,120

1509 6574993,237 647899,668 87,354
 1510 6574993,072 647899,668 87,332
 1511 6574992,410 647895,364 87,446
 1512 6574992,906 647895,033 87,352
 1513 6574993,734 647894,371 88,146
 1514 6574991,582 647889,241 88,180
 1515 6574992,410 647888,910 89,187
 1516 6574996,878 647899,171 88,913
 1517 6574997,540 647899,171 88,898
 1518 6575001,512 647898,013 84,720
 1519 6574999,195 647890,565 85,530
 1520 6574995,223 647891,889 89,517
 1521 6574994,727 647892,054 89,595
 1522 6574996,547 647881,793 86,260
 1523 6574992,410 647882,786 90,242
 1524 6574991,913 647883,117 90,335
 1525 6574990,589 647883,448 89,022
 1526 6574988,603 647875,835 89,187
 1527 6574988,934 647875,670 89,743
 1528 6574990,258 647875,007 90,632
 1529 6574991,086 647875,173 90,598
 1530 6574994,892 647874,180 86,540
 1531 6574994,065 647867,725 86,810
 1532 6574990,093 647869,877 90,833
 1533 6574989,596 647869,877 90,869
 1534 6574989,100 647867,063 91,434
 1535 6574989,762 647866,567 91,530
 1536 6574993,237 647862,429 87,490
 1537 6574981,155 647833,631 92,211
 1538 6574966,922 647768,092 89,304
 1539 6574964,440 647760,313 88,894
 1540 6574962,950 647753,197 88,858
 1541 6574961,957 647745,418 88,376
 1542 6574960,302 647737,805 88,429
 1543 6574959,309 647730,357 88,465
 1544 6574956,992 647722,909 88,177
 1545 6574955,668 647718,275 88,125
 1546 6574955,171 647713,972 88,007
 1547 6574954,013 647708,014 87,793
 1548 6574953,020 647703,380 87,780
 1549 6574951,696 647697,091 87,700
 1550 6574951,034 647693,284 87,499
 1551 6574949,875 647687,326 87,600
 1552 6574948,717 647682,526 87,624
 1553 6574947,227 647675,410 87,632
 1554 6574946,234 647670,279 87,579
 1555 6574944,910 647663,493 87,804
 1556 6574944,579 647662,004 87,709
 1557 6574926,539 647662,169 87,703
 1558 6574925,712 647659,852 87,986
 1559 6574924,057 647660,349 88,082
 1560 6574923,891 647660,514 87,955
 1561 6574921,243 647666,472 89,287
 1562 6574921,243 647669,286 89,256

1563 6574920,746 647671,603 89,221
 1564 6574917,105 647671,603 89,618
 1565 6574916,609 647669,948 89,767
 1566 6574916,609 647669,121 89,832
 1567 6574916,112 647666,969 89,737
 1568 6574914,126 647668,127 89,815
 1569 6574913,133 647669,948 89,799
 1570 6574913,464 647671,934 89,619
 1571 6574916,443 647672,762 89,560
 1572 6574924,057 647673,258 88,297
 1573 6574926,374 647671,769 87,973
 1574 6574943,255 647657,535 87,812
 1575 6574941,600 647650,253 87,965
 1576 6574939,614 647642,640 88,032
 1577 6574937,959 647635,027 87,900
 1578 6574936,469 647626,751 87,661
 1579 6574935,145 647619,138 87,420
 1580 6574933,490 647610,863 87,189
 1581 6574932,001 647603,415 86,714
 1582 6574930,842 647597,954 86,718
 1583 6574929,684 647593,485 86,652
 1584 6574928,525 647592,823 86,411
 1585 6574926,705 647592,823 86,459
 1586 6574927,036 647593,816 85,848
 1587 6574928,525 647594,313 85,675
 1588 6574929,022 647597,954 85,362
 1589 6574929,518 647600,436 85,212
 1590 6574927,698 647598,450 85,288
 1591 6574926,870 647597,292 85,508
 1592 6574927,367 647596,133 85,617
 1593 6574925,215 647595,968 86,035
 1594 6574922,733 647595,306 86,230
 1595 6574919,588 647594,809 86,819
 1596 6574916,112 647593,320 86,763
 1597 6574912,637 647593,485 86,337
 1598 6574907,506 647593,485 86,660
 1599 6574907,837 647594,644 86,264
 1600 6574903,700 647595,471 86,450
 1601 6574899,893 647595,968 86,312
 1602 6574896,748 647597,788 86,147
 1603 6574896,252 647598,119 85,852
 1604 6574897,576 647598,781 85,411
 1605 6574897,245 647600,933 85,675
 1606 6574897,079 647601,429 85,588
 1607 6574896,914 647599,940 85,809
 1608 6574895,755 647598,450 85,821
 1609 6574894,762 647597,954 86,573
 1610 6574893,273 647598,947 86,436
 1611 6574893,107 647599,443 85,780
 1612 6574893,438 647600,105 85,744
 1613 6574893,935 647601,264 85,624
 1614 6574891,949 647601,098 85,371
 1615 6574891,949 647600,436 85,629
 1616 6574890,790 647599,112 86,594

1617 6574885,991 647601,595 86,471
 1618 6574886,487 647602,257 85,970
 1619 6574881,853 647603,746 86,593
 1620 6574875,729 647606,229 87,191
 1621 6574875,895 647607,222 86,634
 1622 6574876,060 647607,884 86,655
 1623 6574873,743 647609,374 86,635
 1624 6574873,412 647608,546 86,891
 1625 6574873,247 647607,884 87,338
 1626 6574870,433 647612,187 86,707
 1627 6574867,951 647610,863 87,312
 1628 6574867,620 647610,532 87,869
 1629 6574864,641 647612,684 87,731
 1630 6574865,303 647613,346 87,643
 1631 6574866,296 647614,008 86,992
 1632 6574862,158 647614,504 88,018
 1633 6574862,158 647615,497 87,982
 1634 6574862,489 647616,325 87,331
 1635 6574857,855 647618,642 88,762
 1636 6574858,020 647619,138 88,562
 1637 6574858,186 647619,800 88,354
 1638 6574854,379 647621,124 88,815
 1639 6574850,904 647621,952 89,296
 1640 6574848,752 647623,938 89,218
 1641 6574848,256 647623,607 89,392
 1642 6574843,622 647626,420 89,683
 1643 6574843,787 647627,579 89,600
 1644 6574844,284 647628,241 89,275
 1645 6574841,470 647628,076 89,626
 1646 6574841,305 647629,234 89,736
 1647 6574841,470 647629,400 89,689
 1648 6574837,994 647630,062 89,819
 1649 6574847,263 647625,593 88,732
 1650 6574837,498 647630,889 89,734
 1651 6574837,001 647630,393 89,720
 1652 6574834,519 647632,544 89,606
 1653 6574834,022 647632,213 89,815
 1654 6574830,547 647634,530 89,807
 1655 6574856,696 647626,255 85,338
 1656 6574859,675 647624,434 85,169
 1657 6574862,986 647621,290 84,936
 1658 6574867,289 647618,807 84,814
 1659 6574926,043 647606,063 82,955
 1660 6574926,870 647610,532 83,327
 1661 6574927,863 647615,332 83,450
 1662 6574934,980 647653,398 83,181
 1663 6574921,574 647653,067 83,213
 1664 6574918,760 647653,894 83,332
 1665 6574912,968 647656,873 83,599
 1666 6574908,665 647659,521 83,674
 1667 6574905,355 647662,997 83,739
 1668 6574903,203 647666,638 83,730
 1669 6574902,210 647671,107 83,565
 1670 6574903,038 647674,748 83,512

1671 6574905,520 647676,899 83,944
 1672 6574905,355 647677,561 84,130
 1673 6574908,665 647679,051 84,281
 1674 6574912,968 647680,706 84,749
 1675 6574916,609 647681,699 84,032
 1676 6574921,077 647681,533 83,689
 1677 6574921,243 647683,685 83,750
 1678 6574924,388 647685,671 83,159
 1679 6574925,546 647683,023 82,926
 1680 6574941,765 647706,524 82,456
 1681 6574936,138 647696,429 82,628
 1682 6574932,166 647692,953 82,632
 1683 6574930,346 647690,471 82,592
 1684 6574928,691 647693,781 82,848
 1685 6574929,187 647696,263 82,822
 1686 6574928,856 647700,401 82,877
 1687 6574931,008 647699,077 82,698
 1688 6574935,476 647706,855 82,386
 1689 6574939,283 647712,317 82,487
 1690 6574932,332 647713,476 82,629
 1691 6574931,835 647708,179 82,579
 1692 6574929,849 647703,380 82,637
 1693 6574928,194 647705,862 82,787
 1694 6574925,877 647709,172 82,722
 1695 6574927,201 647712,483 82,712
 1696 6574927,532 647716,620 82,703
 1697 6574923,064 647718,772 82,724
 1698 6574922,733 647712,814 82,858
 1699 6574919,257 647715,793 82,855
 1700 6574915,285 647718,110 82,881
 1701 6574915,450 647721,751 82,931
 1702 6574910,485 647724,730 82,792
 1703 6574911,644 647719,599 82,843
 1704 6574909,658 647719,434 82,961
 1705 6574907,010 647719,103 82,952
 1706 6574905,189 647713,972 82,988
 1707 6574906,513 647708,841 82,889
 1708 6574909,823 647713,476 82,905
 1709 6574914,788 647712,814 83,074
 1710 6574899,727 647706,028 82,808
 1711 6574899,893 647710,993 82,906
 1712 6574903,865 647706,524 82,926
 1713 6574902,541 647711,986 82,927
 1714 6574902,045 647718,606 83,181
 1715 6574903,865 647718,772 83,222
 1716 6574898,238 647717,448 82,769
 1717 6574895,424 647714,965 82,787
 1718 6574894,431 647711,324 82,975
 1719 6574893,604 647707,186 82,777
 1720 6574893,769 647703,876 82,951
 1721 6574893,604 647698,911 83,026
 1722 6574894,597 647693,450 82,965
 1723 6574895,424 647689,478 83,239
 1724 6574896,914 647684,512 83,303

1725 6574898,734 647681,699 83,517
 1726 6574901,383 647677,396 83,483
 1727 6574896,748 647674,417 83,439
 1728 6574898,238 647667,465 83,541
 1729 6574899,065 647663,659 83,640
 1730 6574899,893 647656,542 83,649
 1731 6574903,203 647653,894 83,701
 1732 6574908,665 647651,908 83,469
 1733 6574912,802 647650,750 83,461
 1734 6574916,940 647648,929 83,319
 1735 6574916,774 647642,640 83,644
 1736 6574909,658 647639,330 84,180
 1737 6574909,823 647644,791 83,774
 1738 6574904,031 647647,274 83,717
 1739 6574899,231 647647,274 83,883
 1740 6574898,734 647641,481 84,106
 1741 6574902,541 647640,323 83,969
 1742 6574905,520 647635,854 84,205
 1743 6574891,287 647641,316 84,415
 1744 6574894,928 647644,460 84,021
 1745 6574898,238 647649,426 83,694
 1746 6574898,734 647655,715 83,738
 1747 6574896,914 647662,169 83,668
 1748 6574895,755 647667,962 83,445
 1749 6574891,121 647689,643 82,845
 1750 6574890,294 647695,932 82,696
 1751 6574889,466 647701,394 82,704
 1752 6574889,301 647706,690 82,786
 1753 6574888,804 647711,986 82,930
 1754 6574882,681 647712,648 82,716
 1755 6574882,184 647707,517 82,697
 1756 6574883,839 647702,387 82,565
 1757 6574885,494 647697,422 82,755
 1758 6574890,790 647663,824 83,598
 1759 6574891,287 647658,528 83,619
 1760 6574888,970 647657,535 83,736
 1761 6574888,308 647654,225 83,677
 1762 6574870,102 647649,095 81,086
 1763 6574884,170 647667,465 82,152
 1764 6574883,508 647675,079 81,127
 1765 6574879,867 647677,892 80,662
 1766 6574876,888 647661,011 80,660
 1767 6574876,060 647680,044 80,776
 1768 6574847,263 647657,039 82,406
 1769 6574840,808 647657,701 82,444
 1770 6574836,339 647660,018 82,525
 1771 6574826,740 647664,321 82,594
 1772 6574817,803 647668,459 82,804
 1773 6574812,838 647670,114 82,935
 1774 6574802,742 647673,755 83,115
 1775 6574797,777 647678,223 82,781
 1776 6574795,460 647684,512 82,521
 1777 6574798,108 647688,153 82,448
 1778 6574800,756 647693,615 82,385

1779 6574802,246 647698,415 82,576
 1780 6574800,260 647702,718 83,233
 1781 6574797,446 647704,207 83,626
 1782 6574795,625 647707,021 84,017
 1783 6574794,798 647709,835 83,918
 1784 6574795,460 647711,986 83,748
 1785 6574797,446 647711,655 83,488
 1786 6574797,280 647708,841 83,603
 1787 6574799,267 647706,193 83,282
 1788 6574801,749 647703,876 82,776
 1789 6574804,232 647701,890 82,748
 1790 6574807,045 647702,552 82,482
 1791 6574807,211 647706,359 82,817
 1792 6574807,211 647708,014 82,724
 1793 6574804,066 647709,338 83,222
 1794 6574802,411 647711,655 83,326
 1795 6574800,260 647712,483 83,404
 1796 6574799,929 647710,993 84,175
 1797 6574799,598 647709,669 84,448
 1798 6574801,087 647707,352 83,991
 1799 6574802,908 647705,697 84,167
 1800 6574804,397 647705,035 84,036
 1801 6574805,059 647705,366 84,101
 1802 6574804,397 647707,021 84,092
 1803 6574803,239 647708,179 84,019
 1804 6574801,253 647709,835 84,142
 1805 6574797,280 647715,958 83,604
 1806 6574797,446 647719,599 83,446
 1807 6574800,260 647718,772 83,496
 1808 6574803,239 647716,620 83,189
 1809 6574806,549 647714,303 83,068
 1810 6574809,528 647711,324 82,562
 1811 6574809,859 647717,613 82,279
 1812 6574807,045 647718,937 82,959
 1813 6574810,521 647723,902 82,232
 1814 6574807,376 647723,902 82,602
 1815 6574802,577 647724,564 82,807
 1816 6574797,943 647722,909 83,217
 1817 6574797,943 647726,385 83,086
 1818 6574796,287 647729,860 83,262
 1819 6574799,432 647731,350 82,914
 1820 6574803,570 647732,012 82,370
 1821 6574806,383 647732,840 82,319
 1822 6574809,197 647733,998 82,032
 1823 6574806,549 647737,143 82,106
 1824 6574803,404 647735,653 82,398
 1825 6574799,432 647734,660 82,733
 1826 6574795,791 647732,840 83,100
 1827 6574794,632 647734,164 83,122
 1828 6574795,956 647735,819 83,029
 1829 6574798,274 647738,136 82,889
 1830 6574801,087 647739,460 82,501
 1831 6574804,066 647741,777 82,576
 1832 6574807,045 647743,266 82,179

1833	6574810,190	647745,418	82,065	1887	6574849,249	647761,472	86,014
1834	6574813,831	647747,900	81,958	1888	6574849,249	647762,134	85,919
1835	6574817,803	647750,879	82,096	1889	6574846,932	647764,782	86,062
1836	6574822,934	647754,521	82,091	1890	6574844,449	647768,257	86,231
1837	6574827,568	647757,169	82,182	1891	6574841,967	647769,581	86,536
1838	6574831,209	647758,824	82,263	1892	6574838,656	647769,250	86,759
1839	6574835,677	647759,320	82,153	1893	6574836,174	647765,940	86,744
1840	6574838,491	647759,320	82,144	1894	6574831,374	647764,616	86,485
1841	6574840,808	647760,975	82,365	1895	6574824,092	647761,803	86,325
1842	6574841,967	647761,472	82,305	1896	6574817,141	647757,169	86,043
1843	6574844,118	647757,831	82,179	1897	6574809,528	647752,038	86,051
1844	6574846,932	647754,521	82,198	1898	6574802,080	647746,245	85,781
1845	6574850,904	647751,542	82,131	1899	6574801,418	647746,742	85,907
1846	6574854,048	647749,555	82,187	1900	6574801,418	647747,404	85,998
1847	6574857,524	647747,404	82,709	1901	6574799,598	647745,418	85,700
1848	6574859,841	647744,259	82,318	1902	6574799,598	647745,252	86,011
1849	6574863,979	647739,956	82,191	1903	6574799,929	647744,756	85,878
1850	6574867,289	647737,143	82,626	1904	6574797,446	647742,273	86,339
1851	6574868,944	647735,984	82,356	1905	6574793,308	647739,294	86,226
1852	6574868,613	647735,653	82,097	1906	6574790,495	647737,143	86,496
1853	6574865,965	647735,488	82,396	1907	6574789,998	647733,998	86,706
1854	6574866,130	647734,826	81,949	1908	6574791,653	647730,191	86,735
1855	6574864,972	647733,502	82,373	1909	6574793,143	647727,047	86,600
1856	6574865,468	647733,336	82,084	1910	6574792,646	647722,578	86,936
1857	6574866,296	647730,523	82,453	1911	6574791,488	647717,117	86,647
1858	6574867,289	647730,191	82,061	1912	6574791,322	647711,821	86,838
1859	6574868,447	647729,529	82,041	1913	6574790,660	647707,517	86,335
1860	6574868,778	647730,191	81,868	1914	6574792,812	647703,049	86,380
1861	6574870,102	647729,860	81,981	1915	6574793,805	647700,897	86,241
1862	6574870,764	647730,523	82,079	1916	6574793,308	647697,422	86,721
1863	6574871,923	647729,198	82,382	1917	6574783,544	647670,279	87,631
1864	6574874,405	647727,378	82,537	1918	6574782,220	647670,941	87,586
1865	6574878,212	647724,564	82,743	1919	6574777,586	647673,589	87,723
1866	6574878,708	647726,716	83,310	1920	6574777,255	647677,561	87,608
1867	6574878,543	647726,550	83,484	1921	6574773,117	647678,885	87,524
1868	6574877,715	647727,543	83,628	1922	6574771,131	647682,857	87,743
1869	6574875,067	647729,860	83,924	1923	6574767,821	647684,678	87,808
1870	6574876,060	647730,688	84,083	1924	6574766,000	647685,671	87,819
1871	6574876,888	647731,185	83,507	1925	6574763,187	647687,160	87,897
1872	6574872,088	647736,646	84,036	1926	6574757,560	647690,471	87,988
1873	6574872,419	647737,308	84,090	1927	6574754,249	647693,119	87,844
1874	6574872,585	647738,301	83,701	1928	6574750,277	647697,422	87,710
1875	6574866,627	647745,087	83,959	1929	6574748,622	647702,883	87,599
1876	6574865,303	647744,921	84,447	1930	6574750,112	647708,510	87,609
1877	6574864,144	647744,590	84,248	1931	6574753,587	647712,979	87,431
1878	6574859,841	647751,376	84,349	1932	6574758,222	647715,627	87,202
1879	6574858,682	647751,211	84,753	1933	6574760,539	647716,620	87,148
1880	6574858,186	647750,879	84,686	1934	6574763,352	647721,089	87,121
1881	6574853,717	647758,327	85,445	1935	6574766,497	647722,413	87,063
1882	6574853,552	647758,327	85,465	1936	6574774,441	647729,198	86,815
1883	6574852,724	647757,831	85,660	1937	6574778,082	647731,681	86,811
1884	6574850,738	647761,306	85,796	1938	6574781,558	647734,991	86,601
1885	6574849,911	647761,637	86,127	1939	6574784,702	647736,977	86,438
1886	6574849,580	647761,472	86,003	1940	6574786,357	647737,308	86,372

1941 6574787,019 647733,005 87,387
 1942 6574785,695 647728,205 88,142
 1943 6574784,371 647721,751 88,079
 1944 6574780,896 647717,944 88,288
 1945 6574776,261 647716,455 88,878
 1946 6574771,627 647716,124 88,914
 1947 6574769,310 647713,310 89,459
 1948 6574768,814 647710,000 90,126
 1949 6574769,145 647705,697 90,484
 1950 6574769,972 647701,394 90,447
 1951 6574771,627 647697,587 90,402
 1952 6574774,275 647694,443 90,266
 1953 6574769,807 647694,277 90,543
 1954 6574766,331 647697,422 90,696
 1955 6574764,511 647698,580 90,651
 1956 6574761,863 647700,897 90,641
 1957 6574759,546 647704,042 90,549
 1958 6574759,546 647706,028 90,078
 1959 6574764,014 647706,524 90,054
 1960 6574765,504 647708,841 90,162
 1961 6574771,296 647707,848 89,506
 1962 6574775,103 647707,021 88,784
 1963 6574778,082 647704,538 87,944
 1964 6574780,730 647698,415 87,709
 1965 6574784,040 647700,566 87,499
 1966 6574785,199 647705,697 87,491
 1967 6574787,185 647709,007 87,542
 1968 6574787,350 647713,641 87,329
 1969 6574843,622 647774,547 86,993
 1970 6574846,601 647769,747 86,486
 1971 6574850,242 647764,947 85,935
 1972 6574853,055 647761,968 85,758
 1973 6574856,200 647758,658 85,258
 1974 6574858,682 647756,176 84,820
 1975 6574861,993 647753,031 84,304
 1976 6574865,137 647750,052 84,118
 1977 6574868,778 647746,576 83,849
 1978 6574873,743 647747,404 83,327
 1979 6574877,715 647747,404 83,334
 1980 6574880,198 647745,583 83,308
 1981 6574883,343 647743,928 83,114
 1982 6574894,762 647758,824 87,471
 1983 6574895,590 647757,169 87,132
 1984 6574896,252 647755,845 87,605
 1985 6574896,914 647754,521 87,878
 1986 6574897,576 647752,700 88,006
 1987 6574898,900 647752,204 88,074
 1988 6574900,058 647751,211 88,028
 1989 6574901,383 647750,217 88,426
 1990 6574902,210 647749,390 89,044
 1991 6574902,376 647748,893 89,197
 1992 6574904,031 647747,900 89,961
 1993 6574905,355 647747,735 89,609
 1994 6574906,513 647747,238 89,716

1995 6574907,341 647746,907 89,708
 1996 6574908,003 647746,245 89,743
 1997 6574909,492 647744,921 89,120
 1998 6574907,010 647745,914 89,910
 1999 6574902,872 647746,080 89,578
 2000 6574899,727 647748,397 88,972
 2001 6574896,914 647751,211 87,849
 2002 6574895,590 647755,017 87,521
 2003 6574886,653 647745,087 83,073
 2004 6574887,646 647739,625 82,974
 2005 6574888,804 647734,826 83,020
 2006 6574883,343 647734,660 83,208
 2007 6574883,343 647730,357 83,097
 2008 6574882,846 647723,240 82,731
 2009 6574877,219 647719,434 82,382
 2010 6574872,419 647717,944 82,377
 2011 6574866,461 647720,923 82,257
 2012 6574863,151 647724,895 82,246
 2013 6574860,172 647729,198 82,313
 2014 6574856,531 647733,502 82,260
 2015 6574853,386 647737,970 82,322
 2016 6574850,242 647741,777 82,275
 2017 6574846,932 647746,080 82,273
 2018 6574843,125 647750,052 82,351
 2019 6574840,477 647752,866 82,217
 2020 6574833,526 647750,879 82,190
 2021 6574827,237 647748,066 82,207
 2022 6574823,430 647746,080 82,197
 2023 6574818,134 647742,770 82,208
 2024 6574813,831 647740,949 82,139
 2025 6574815,982 647732,509 82,114
 2026 6574822,272 647734,164 82,212
 2027 6574826,740 647736,646 82,191
 2028 6574830,878 647739,460 82,254
 2029 6574835,015 647742,770 82,214
 2030 6574837,167 647743,928 82,375
 2031 6574841,801 647738,963 82,286
 2032 6574837,663 647736,481 82,264
 2033 6574833,195 647733,833 82,187
 2034 6574828,892 647730,854 82,299
 2035 6574818,299 647724,233 82,200
 2036 6574814,989 647716,289 82,373
 2037 6574845,608 647728,205 82,329
 2038 6574849,911 647729,695 82,351
 2039 6574853,883 647722,247 82,321
 2040 6574849,911 647720,261 82,407
 2041 6574844,615 647717,944 82,516
 2042 6574838,656 647715,131 82,524
 2043 6574831,374 647710,993 82,700
 2044 6574825,251 647708,179 82,611
 2045 6574819,293 647705,531 82,432
 2046 6574815,155 647703,711 82,315
 2047 6574810,852 647698,084 82,432
 2048 6574808,369 647694,277 82,517

2049 6574805,225 647690,305 82,376
 2050 6574798,770 647684,181 82,468
 2051 6574799,101 647683,685 82,697
 2052 6574800,922 647684,181 82,442
 2053 6574797,611 647680,044 82,782
 2054 6574797,446 647679,216 83,012
 2055 6574801,418 647682,361 83,174
 2056 6574802,411 647683,188 82,723
 2057 6574801,915 647679,547 83,217
 2058 6574806,549 647679,547 82,975
 2059 6574807,045 647680,540 82,515
 2060 6574811,679 647675,244 82,979
 2061 6574812,010 647678,389 82,964
 2062 6574811,845 647679,878 82,561
 2063 6574816,644 647678,389 82,872
 2064 6574816,479 647680,209 82,836
 2065 6574815,982 647681,202 82,515
 2066 6574821,279 647684,181 82,838
 2067 6574820,617 647685,174 82,802
 2068 6574819,789 647685,671 82,634
 2069 6574825,251 647691,960 82,877
 2070 6574824,589 647692,788 82,811
 2071 6574823,927 647693,450 82,620
 2072 6574829,223 647699,904 82,817
 2073 6574829,057 647700,732 82,819
 2074 6574828,230 647701,559 82,713
 2075 6574831,705 647707,021 82,578
 2076 6574832,698 647707,517 82,601
 2077 6574828,064 647708,510 82,574
 2078 6574826,740 647708,345 82,655
 2079 6574823,761 647704,207 82,477
 2080 6574821,610 647700,401 82,437
 2081 6574818,134 647693,450 82,324
 2082 6574814,824 647688,319 82,267
 2083 6574812,176 647685,671 82,237
 2084 6574818,134 647677,065 82,796
 2085 6574817,472 647672,596 82,840
 2086 6574821,444 647670,114 82,717
 2087 6574826,575 647667,631 82,649
 2088 6574831,540 647665,314 82,715
 2089 6574835,677 647663,493 82,701
 2090 6574838,987 647662,169 82,517
 2091 6574842,132 647661,011 82,497
 2092 6574846,766 647660,183 82,393
 2093 6574844,615 647663,493 82,457
 2094 6574844,615 647664,652 82,219
 2095 6574839,319 647666,638 82,564
 2096 6574838,822 647667,465 82,384
 2097 6574833,195 647667,631 82,492
 2098 6574832,533 647668,955 82,216
 2099 6574828,561 647671,769 82,608
 2100 6574829,388 647673,258 82,399
 2101 6574824,589 647675,410 82,712
 2102 6574824,754 647676,237 82,408

2103 6574823,265 647681,699 82,676
 2104 6574823,596 647682,195 82,444
 2105 6574826,740 647689,643 82,744
 2106 6574827,237 647689,974 82,476
 2107 6574829,885 647696,263 82,643
 2108 6574830,712 647696,760 82,473
 2109 6574832,698 647702,221 82,583
 2110 6574833,526 647702,718 82,391
 2111 6574835,181 647705,862 82,257
 2112 6574844,284 647710,662 82,399
 2113 6574842,794 647708,345 82,274
 2114 6574840,312 647702,552 82,175
 2115 6574837,994 647698,746 82,323
 2116 6574836,174 647695,105 82,429
 2117 6574834,684 647690,802 82,400
 2118 6574830,547 647689,974 82,336
 2119 6574828,064 647686,498 82,318
 2120 6574825,747 647682,361 82,321
 2121 6574826,078 647677,892 82,284
 2122 6574829,388 647677,561 82,275
 2123 6574833,360 647681,368 82,362
 2124 6574837,001 647684,347 82,342
 2125 6574837,994 647687,326 82,325
 2126 6574836,670 647689,478 82,355
 2127 6574839,981 647691,464 82,300
 2128 6574844,449 647696,925 82,097
 2129 6574850,738 647703,545 82,204
 2130 6574854,214 647706,855 82,165
 2131 6574858,020 647710,828 82,298
 2132 6574861,331 647713,972 82,226
 2133 6574865,965 647710,000 82,351
 2134 6574861,827 647705,200 82,120
 2135 6574856,862 647700,070 82,138
 2136 6574852,890 647695,767 82,173
 2137 6574849,414 647691,464 82,218
 2138 6574846,601 647687,657 82,030
 2139 6574843,291 647684,181 82,214
 2140 6574840,643 647680,871 82,326
 2141 6574837,994 647677,396 82,228
 2142 6574834,684 647673,589 82,059
 2143 6574841,470 647674,913 82,094
 2144 6574844,780 647676,568 82,071
 2145 6574847,428 647679,547 82,142
 2146 6574849,745 647686,829 82,062
 2147 6574851,400 647691,795 82,004
 2148 6574857,027 647696,760 82,093
 2149 6574860,338 647700,566 82,145
 2150 6574864,310 647703,876 82,170
 2151 6574868,778 647707,352 82,203
 2152 6574873,743 647710,497 82,317
 2153 6574876,722 647704,538 82,323
 2154 6574874,074 647700,566 82,294
 2155 6574870,433 647696,098 82,237
 2156 6574866,792 647690,967 82,197

2157 6574862,655 647685,671 82,064
 2158 6574860,338 647682,526 82,117
 2159 6574858,682 647679,216 82,208
 2160 6574854,876 647674,086 82,070
 2161 6574852,228 647668,955 82,299
 2162 6574848,918 647671,769 82,179
 2163 6574853,221 647664,817 82,271
 2164 6574860,007 647673,093 82,208
 2165 6574863,317 647677,561 82,106
 2166 6574867,454 647683,188 82,113
 2167 6574878,212 647699,242 82,228
 2168 6574883,508 647704,207 82,448
 2169 6574888,308 647710,000 82,787
 2170 6574889,301 647714,800 82,860
 2171 6574889,301 647717,779 82,878
 2172 6574889,632 647720,923 82,926
 2173 6574889,632 647723,571 82,877
 2174 6574891,121 647727,709 82,927
 2175 6574893,438 647731,350 82,884
 2176 6574898,569 647731,847 82,835
 2177 6574900,886 647727,874 82,852
 2178 6574873,743 647655,053 80,650
 2179 6574878,046 647668,790 80,600
 2180 6574874,240 647676,403 80,650
 2181 6574867,785 647666,307 80,670
 2182 6574861,331 647657,039 80,690
 2183 6574865,799 647651,908 80,677
 2184 6574945,900 647799,910 82,529
 2185 6574950,430 647797,450 82,546
 2186 6574956,000 647792,200 82,361
 2187 6574958,950 647789,210 82,395
 2188 6574960,140 647795,550 82,492
 2189 6574961,460 647801,610 82,873
 2190 6574963,360 647809,730 83,157
 2191 6574965,050 647817,740 83,390
 2192 6574967,160 647825,040 83,745
 2193 6574969,220 647832,580 84,075
 2194 6574972,260 647840,160 84,458
 2195 6574973,570 647848,380 84,702
 2196 6574975,020 647856,320 84,604
 2197 6574974,340 647860,410 84,591
 2198 6574975,420 647866,280 84,473
 2199 6574976,300 647868,770 84,589
 2200 6574977,300 647874,360 84,568
 2201 6574980,300 647876,710 85,476
 2202 6574980,850 647874,510 86,011
 2203 6574979,860 647874,680 85,975
 2204 6574980,380 647871,450 85,894
 2205 6574978,210 647871,520 86,071
 2206 6574978,500 647869,650 86,212
 2207 6574979,490 647867,910 86,427
 2208 6574980,190 647869,860 86,126
 2209 6574985,660 647866,240 89,460
 2210 6574986,490 647865,870 89,615

2211 6574986,900 647865,610 89,776
 2212 6574988,910 647864,290 89,679
 2213 6574992,390 647862,360 89,039
 2214 6574993,690 647860,930 88,149
 2215 6574992,510 647857,190 88,790
 2216 6574991,760 647857,430 89,364
 2217 6574988,570 647857,250 89,900
 2218 6574985,240 647858,080 90,193
 2219 6574984,220 647858,010 90,267
 2220 6574983,270 647851,460 90,787
 2221 6574986,020 647850,510 90,753
 2222 6574990,070 647849,470 90,237
 2223 6574988,180 647843,750 91,183
 2224 6574984,810 647844,170 91,238
 2225 6574982,250 647845,030 91,191
 2226 6574980,770 647837,050 91,647
 2227 6574983,520 647836,550 91,962
 2228 6574985,740 647835,990 92,162
 2229 6574985,750 647836,000 92,215
 2230 6574984,010 647828,800 92,862
 2231 6574981,480 647829,040 92,590
 2232 6574979,250 647829,480 92,397
 2233 6574978,500 647824,000 92,539
 2234 6574980,840 647823,350 92,556
 2235 6574983,010 647822,700 92,742
 2236 6574981,890 647817,130 92,219
 2237 6574979,510 647817,670 92,317
 2238 6574977,420 647818,540 92,358
 2239 6574976,240 647812,850 91,902
 2240 6574978,640 647812,680 91,825
 2241 6574981,490 647812,370 91,653
 2242 6574979,630 647806,780 90,733
 2243 6574975,040 647807,890 90,996
 2244 6574973,850 647802,280 90,507
 2245 6574972,300 647797,440 89,543
 2246 6574971,160 647789,870 89,675
 2247 6574969,440 647782,310 89,811
 2248 6574968,540 647777,700 89,934
 2249 6574967,230 647771,780 89,664
 2250 6574985,870 647866,610 89,477
 2251 6574986,610 647866,330 89,583
 2252 6574987,340 647866,290 89,917
 2253 6574986,070 647863,560 89,790
 2254 6574987,070 647871,150 89,238
 2255 6574987,990 647871,720 89,362
 2256 6574988,660 647871,720 89,907
 2257 6574987,620 647875,580 89,308
 2258 6574986,640 647878,600 89,202
 2259 6574985,580 647883,030 89,614
 2260 6574983,790 647884,450 89,563
 2261 6574980,380 647886,380 91,108
 2262 6574977,120 647887,520 91,422
 2263 6574973,900 647891,870 91,906
 2264 6574970,220 647896,300 91,648

2265	6574966,390	647899,530	91,289	2319	6574939,610	647845,100	87,490
2266	6574962,440	647900,730	91,479	2320	6574940,270	647848,800	86,955
2267	6574958,680	647900,160	91,364	2321	6574939,700	647848,740	87,532
2268	6574953,210	647896,710	91,175	2322	6574942,790	647843,400	86,989
2269	6574950,260	647894,040	91,130	2323	6574946,880	647840,710	87,387
2270	6574948,670	647890,920	91,095	2324	6574942,440	647839,200	87,094
2271	6574946,940	647889,250	91,045	2325	6574938,900	647836,210	86,964
2272	6574944,630	647888,760	90,909	2326	6574939,180	647830,990	86,976
2273	6574941,620	647886,110	90,472	2327	6574939,440	647825,900	86,774
2274	6574938,810	647882,890	89,713	2328	6574939,490	647824,190	86,736
2275	6574936,680	647879,180	89,180	2329	6574943,390	647826,030	86,523
2276	6574936,660	647879,170	89,142	2330	6574946,190	647827,190	85,930
2277	6574936,670	647875,800	89,141	2331	6574948,130	647828,580	85,459
2278	6574936,480	647871,470	89,600	2332	6574948,130	647828,580	85,451
2279	6574938,680	647869,550	89,824	2333	6574945,660	647831,210	85,789
2280	6574940,920	647868,890	89,634	2334	6574944,890	647833,360	85,523
2281	6574941,780	647868,210	89,313	2335	6574947,080	647835,020	86,143
2282	6574942,340	647863,730	88,703	2336	6574950,030	647836,170	86,039
2283	6574942,740	647860,930	88,402	2337	6574951,070	647837,840	86,550
2284	6574941,900	647858,900	87,835	2338	6574952,220	647841,150	87,034
2285	6574941,210	647857,740	87,362	2339	6574953,790	647842,370	86,208
2286	6574940,440	647855,280	87,170	2340	6574953,380	647838,090	86,803
2287	6574940,560	647852,780	87,056	2341	6574952,930	647834,840	86,596
2288	6574941,470	647848,810	86,827	2342	6574951,710	647835,710	86,602
2289	6574943,980	647845,620	87,001	2343	6574951,400	647832,220	86,944
2290	6574947,240	647843,060	87,287	2344	6574950,630	647831,410	86,752
2291	6574951,380	647842,050	87,746	2345	6574949,160	647831,660	86,798
2292	6574950,420	647839,050	87,727	2346	6574947,420	647832,240	86,868
2293	6574948,630	647837,150	87,541	2347	6574949,030	647834,080	86,712
2294	6574946,510	647836,620	87,529	2348	6574950,180	647828,030	84,803
2295	6574944,110	647836,010	87,162	2349	6574952,310	647827,680	84,339
2296	6574942,460	647835,240	87,290	2350	6574955,130	647828,540	83,554
2297	6574942,700	647834,560	86,624	2351	6574956,830	647832,440	83,666
2298	6574939,340	647832,840	87,073	2352	6574957,840	647838,030	83,998
2299	6574940,190	647832,290	86,726	2353	6574957,120	647841,240	84,453
2300	6574936,390	647829,040	86,926	2354	6574955,970	647842,410	84,706
2301	6574936,840	647828,830	86,854	2355	6574955,320	647844,550	84,401
2302	6574934,300	647824,260	87,039	2356	6574951,170	647845,970	84,356
2303	6574935,010	647824,200	86,635	2357	6574946,430	647847,290	84,361
2304	6574933,660	647821,820	86,706	2358	6574944,200	647849,840	84,473
2305	6574935,360	647821,110	86,275	2359	6574943,900	647854,040	84,514
2306	6574931,650	647823,160	87,076	2360	6574946,930	647857,450	84,218
2307	6574931,070	647823,160	87,466	2361	6574948,210	647861,220	84,383
2308	6574932,220	647828,770	87,000	2362	6574946,760	647867,070	84,583
2309	6574931,660	647828,790	87,278	2363	6574944,790	647872,560	84,246
2310	6574932,910	647833,580	86,745	2364	6574942,680	647875,900	84,136
2311	6574932,250	647833,620	87,071	2365	6574941,610	647877,850	84,353
2312	6574932,970	647836,360	86,645	2366	6574943,310	647879,710	84,565
2313	6574932,390	647836,840	86,946	2367	6574945,000	647877,150	84,083
2314	6574936,490	647838,530	86,684	2368	6574947,720	647876,780	84,315
2315	6574935,710	647838,780	87,220	2369	6574945,560	647879,910	85,540
2316	6574939,170	647842,630	86,862	2370	6574945,610	647880,850	85,704
2317	6574938,740	647842,940	87,452	2371	6574948,210	647881,280	86,317
2318	6574940,210	647845,320	86,925	2372	6574948,280	647881,300	86,498

2373 6574952,090 647882,380 85,900
 2374 6574952,300 647881,780 86,064
 2375 6574950,340 647880,420 86,191
 2376 6574948,250 647879,770 86,098
 2377 6574949,530 647876,800 84,290
 2378 6574953,440 647878,690 84,463
 2379 6574955,400 647883,030 84,159
 2380 6574957,150 647888,320 84,416
 2381 6574958,240 647891,470 84,614
 2382 6574962,000 647892,270 84,947
 2383 6574965,220 647890,920 84,944
 2384 6574961,840 647888,650 84,477
 2385 6574965,950 647887,760 84,653
 2386 6574968,910 647884,960 84,482
 2387 6574971,780 647883,010 84,607
 2388 6574975,190 647880,520 84,822
 2389 6574976,870 647879,340 85,478
 2390 6574975,010 647877,520 84,587
 2391 6574972,910 647876,290 84,396
 2392 6574967,350 647879,750 84,284
 2393 6574962,340 647882,820 84,158
 2394 6574960,020 647885,390 84,283
 2395 6574959,120 647881,550 84,096
 2396 6574958,360 647878,320 84,379
 2397 6574963,280 647876,430 84,422
 2398 6574967,560 647874,580 84,316
 2399 6574972,560 647871,840 84,469
 2400 6574971,200 647865,670 84,517
 2401 6574965,510 647868,300 84,244
 2402 6574959,500 647870,990 84,399
 2403 6574953,430 647873,360 84,264
 2404 6574947,280 647873,990 84,264
 2405 6574951,250 647868,440 84,269
 2406 6574958,560 647865,710 84,444
 2407 6574965,000 647863,410 84,374
 2408 6574971,000 647861,330 84,584
 2409 6574970,810 647854,210 84,660
 2410 6574963,340 647856,800 84,316
 2411 6574956,620 647859,300 84,391
 2412 6574951,830 647863,250 84,288
 2413 6574950,860 647855,960 84,142
 2414 6574947,280 647851,610 84,110
 2415 6574954,180 647850,070 84,236
 2416 6574955,200 647855,080 84,193
 2417 6574960,630 647853,940 84,425
 2418 6574957,700 647847,490 84,288
 2419 6574962,770 647844,960 84,227
 2420 6574964,540 647850,690 84,514
 2421 6574969,360 647848,870 84,703
 2422 6574967,830 647842,060 84,601
 2423 6574966,350 647835,100 84,081
 2424 6574960,830 647836,380 83,908
 2425 6574958,800 647827,880 83,707
 2426 6574965,430 647826,720 83,616

2427 6574963,350 647820,390 83,436
 2428 6574957,370 647821,860 83,346
 2429 6574955,600 647815,110 83,116
 2430 6574961,000 647813,340 83,076
 2431 6574959,620 647806,430 82,863
 2432 6574954,200 647808,660 83,003
 2433 6574950,400 647802,300 82,715
 2434 6574954,310 647801,090 82,713
 2435 6574958,050 647799,680 82,717
 2436 6574956,170 647793,020 82,401
 2437 6574949,810 647794,870 82,478
 2438 6574943,130 647796,190 82,489
 2439 6574937,910 647799,440 82,280
 2440 6574932,950 647801,510 82,069
 2441 6574930,840 647795,400 82,201
 2442 6574935,450 647793,920 82,252
 2443 6574941,890 647792,140 82,377
 2444 6574939,450 647785,970 82,427
 2445 6574933,160 647788,400 82,298
 2446 6574929,170 647790,790 82,241
 2447 6574925,980 647792,590 82,161
 2448 6574922,060 647789,380 82,191
 2449 6574918,310 647786,350 82,079
 2450 6574924,410 647785,940 82,244
 2451 6574930,880 647785,360 82,327
 2452 6574934,790 647783,750 82,371
 2453 6574929,620 647778,270 82,364
 2454 6574924,440 647780,060 82,242
 2455 6574921,230 647781,020 82,169
 2456 6574922,840 647773,830 82,441
 2457 6574919,220 647774,670 82,211
 2458 6574916,660 647775,660 82,337
 2459 6574916,730 647779,230 82,329
 2460 6574915,380 647782,250 82,275
 2461 6574912,730 647784,170 82,237
 2462 6574911,250 647785,050 82,276
 2463 6574911,170 647785,770 82,293
 2464 6574913,450 647787,890 82,387
 2465 6574915,420 647790,580 82,446
 2466 6574916,920 647792,780 82,342
 2467 6574912,660 647795,780 84,106
 2468 6574909,750 647792,340 83,734
 2469 6574907,680 647789,000 83,792
 2470 6574903,340 647789,660 84,478
 2471 6574902,840 647786,900 83,106
 2472 6574899,810 647786,900 84,025
 2473 6574896,700 647787,350 84,511
 2474 6574895,820 647787,680 84,622
 2475 6574905,000 647785,870 83,313
 2476 6574903,300 647791,780 84,533
 2477 6574905,810 647797,750 84,697
 2478 6574906,150 647792,550 84,402
 2479 6574908,320 647797,310 84,381
 2480 6574906,570 647799,980 85,082

2481	6574909,920	647800,640	84,867	2535	6574890,450	647806,410	86,820
2482	6574907,790	647803,240	85,545	2536	6574887,510	647801,490	86,972
2483	6574908,290	647806,110	85,548	2537	6574891,590	647800,730	87,471
2484	6574905,660	647806,490	86,881	2538	6574889,720	647798,000	87,599
2485	6574902,370	647804,760	86,626	2539	6574890,730	647794,210	87,857
2486	6574904,420	647804,510	87,442	2540	6574892,330	647791,940	87,953
2487	6574902,800	647801,130	87,377	2541	6574890,900	647787,900	88,236
2488	6574900,710	647801,440	87,617	2542	6574889,750	647785,110	88,358
2489	6574900,110	647802,850	87,091	2543	6574894,460	647783,200	88,555
2490	6574897,350	647801,610	87,087	2544	6574898,750	647781,750	88,305
2491	6574897,640	647799,820	87,871	2545	6574903,350	647780,360	88,373
2492	6574899,240	647798,840	87,801	2546	6574907,550	647779,430	87,930
2493	6574900,670	647797,950	87,337	2547	6574909,430	647778,290	87,800
2494	6574898,860	647794,710	87,706	2548	6574908,620	647776,080	88,284
2495	6574896,980	647795,290	87,831	2549	6574907,710	647775,360	88,023
2496	6574898,340	647792,210	87,503	2550	6574906,010	647777,530	89,480
2497	6574896,370	647793,020	87,611	2551	6574886,840	647786,250	88,126
2498	6574894,750	647794,870	87,201	2552	6574883,970	647794,690	87,565
2499	6574894,600	647792,100	86,522	2553	6574883,780	647798,230	87,092
2500	6574894,900	647790,460	86,018	2554	6574883,900	647802,360	86,854
2501	6574893,870	647795,550	87,574	2555	6574884,560	647806,580	86,786
2502	6574893,570	647794,130	87,573	2556	6574886,430	647809,610	86,573
2503	6574893,040	647793,690	87,358	2557	6574889,720	647813,510	86,279
2504	6574891,790	647796,110	87,299	2558	6574893,000	647818,920	86,614
2505	6574893,360	647797,130	88,074	2559	6574895,990	647824,490	86,999
2506	6574894,830	647797,420	87,950	2560	6574897,870	647830,800	87,183
2507	6574892,170	647798,290	87,782	2561	6574902,690	647834,360	86,934
2508	6574891,220	647798,100	87,206	2562	6574905,850	647838,860	86,917
2509	6574893,510	647800,770	87,348	2563	6574908,350	647845,970	87,002
2510	6574895,270	647801,930	87,338	2564	6574906,740	647850,880	87,226
2511	6574895,400	647800,100	87,814	2565	6574902,050	647851,220	88,338
2512	6574893,120	647801,680	87,578	2566	6574896,450	647846,210	88,123
2513	6574895,660	647802,870	87,714	2567	6574894,020	647841,960	88,315
2514	6574896,660	647804,890	88,556	2568	6574896,940	647841,190	90,336
2515	6574897,110	647804,500	88,616	2569	6574898,980	647840,210	89,654
2516	6574898,280	647803,140	87,532	2570	6574901,310	647838,950	89,647
2517	6574899,690	647807,400	88,739	2571	6574903,000	647842,540	89,767
2518	6574899,900	647806,920	88,832	2572	6574904,030	647845,290	89,653
2519	6574900,350	647805,500	87,566	2573	6574904,110	647848,780	89,707
2520	6574903,250	647806,580	87,432	2574	6574901,060	647848,630	89,602
2521	6574902,730	647807,190	87,410	2575	6574898,760	647846,640	89,679
2522	6574905,780	647807,600	87,437	2576	6574900,480	647844,280	89,820
2523	6574904,620	647808,810	87,949	2577	6574901,610	647846,270	89,786
2524	6574902,460	647809,140	88,634	2578	6574898,570	647839,160	90,006
2525	6574902,120	647809,540	88,558	2579	6574895,490	647839,200	90,086
2526	6574904,460	647811,210	88,252	2580	6574894,850	647836,830	90,061
2527	6574905,640	647810,650	87,859	2581	6574896,300	647836,180	90,024
2528	6574898,230	647809,190	87,302	2582	6574895,050	647832,930	89,594
2529	6574901,980	647811,410	87,624	2583	6574894,000	647832,880	89,807
2530	6574903,990	647812,010	87,799	2584	6574892,880	647827,420	89,505
2531	6574899,550	647814,480	87,103	2585	6574893,770	647826,750	89,418
2532	6574896,620	647815,270	86,666	2586	6574890,540	647821,350	88,979
2533	6574893,040	647810,750	86,548	2587	6574889,810	647821,740	89,106
2534	6574895,300	647809,120	86,995	2588	6574886,940	647816,950	88,988

2589	6574887,860	647816,340	88,987	2643	6574907,960	647812,530	87,633
2590	6574884,630	647813,380	89,025	2644	6574907,770	647816,020	87,131
2591	6574884,170	647813,860	89,045	2645	6574906,590	647816,330	88,000
2592	6574881,440	647809,960	88,964	2646	6574906,100	647816,340	88,061
2593	6574881,040	647810,520	89,110	2647	6574904,950	647816,740	87,342
2594	6574880,250	647807,510	89,423	2648	6574908,610	647818,190	86,901
2595	6574879,330	647808,190	89,426	2649	6574907,560	647819,380	86,983
2596	6574877,070	647806,670	89,485	2650	6574906,030	647819,210	87,156
2597	6574878,120	647805,840	89,347	2651	6574901,170	647819,010	87,058
2598	6574879,940	647804,830	88,723	2652	6574903,130	647824,770	86,810
2599	6574880,850	647806,410	88,821	2653	6574898,630	647827,700	86,944
2600	6574882,590	647804,180	88,152	2654	6574898,160	647828,330	87,248
2601	6574882,410	647804,290	88,365	2655	6574900,630	647829,240	86,838
2602	6574882,100	647803,610	88,124	2656	6574900,840	647829,750	87,033
2603	6574880,500	647802,420	87,568	2657	6574904,350	647827,940	86,655
2604	6574877,710	647802,510	87,863	2658	6574904,960	647828,520	86,909
2605	6574876,000	647802,120	87,667	2659	6574907,940	647826,130	86,328
2606	6574875,790	647805,130	88,478	2660	6574908,710	647827,010	86,704
2607	6574875,840	647805,140	88,508	2661	6574911,440	647823,360	86,188
2608	6574877,290	647804,040	88,769	2662	6574912,770	647823,770	86,762
2609	6574874,690	647803,320	88,631	2663	6574914,260	647820,440	86,754
2610	6574874,440	647803,910	88,583	2664	6574914,620	647820,620	86,869
2611	6574877,270	647799,260	89,179	2665	6574915,930	647818,390	86,789
2612	6574878,140	647800,110	89,343	2666	6574913,940	647818,430	85,987
2613	6574878,120	647800,130	89,342	2667	6574911,040	647820,970	85,818
2614	6574879,670	647798,910	89,289	2668	6574911,340	647821,560	86,212
2615	6574878,750	647798,120	89,282	2669	6574910,050	647821,240	85,877
2616	6574881,310	647797,120	88,781	2670	6574909,140	647822,100	86,311
2617	6574880,120	647796,390	88,660	2671	6574909,190	647820,280	85,719
2618	6574880,880	647794,250	88,095	2672	6574907,840	647820,400	86,273
2619	6574882,400	647793,810	88,061	2673	6574910,410	647818,870	85,744
2620	6574879,050	647794,930	87,971	2674	6574910,140	647817,070	85,717
2621	6574875,640	647796,900	87,602	2675	6574910,440	647814,870	85,684
2622	6574874,290	647799,800	87,475	2676	6574911,900	647817,160	85,694
2623	6574874,650	647801,280	87,371	2677	6574913,660	647817,670	85,903
2624	6574872,710	647801,920	87,433	2678	6574912,040	647815,130	85,784
2625	6574872,140	647804,080	87,468	2679	6574909,920	647812,370	86,581
2626	6574873,410	647806,100	87,439	2680	6574908,030	647810,990	87,026
2627	6574874,850	647809,070	87,459	2681	6574907,250	647808,600	86,651
2628	6574877,260	647810,860	87,334	2682	6574908,280	647809,950	87,318
2629	6574877,420	647812,550	87,494	2683	6574910,640	647811,380	87,009
2630	6574878,740	647811,900	87,288	2684	6574910,770	647810,880	86,993
2631	6574881,310	647815,340	87,149	2685	6574911,950	647812,540	86,911
2632	6574884,120	647818,370	87,135	2686	6574912,910	647811,570	86,852
2633	6574886,810	647822,570	87,146	2687	6574914,330	647812,480	86,771
2634	6574888,670	647826,700	87,383	2688	6574913,540	647814,010	86,875
2635	6574890,340	647830,360	87,440	2689	6574914,860	647815,920	87,153
2636	6574890,900	647832,610	87,800	2690	6574915,320	647815,320	87,343
2637	6574891,510	647836,490	88,248	2691	6574916,350	647814,300	86,741
2638	6574893,300	647840,830	88,420	2692	6574915,810	647817,930	86,805
2639	6574903,640	647813,780	87,543	2693	6574915,810	647817,960	86,836
2640	6574904,740	647813,200	88,180	2694	6574920,160	647816,790	87,178
2641	6574906,520	647812,590	88,388	2695	6574918,180	647816,410	87,156
2642	6574906,350	647810,610	87,871	2696	6574921,770	647816,560	87,335

2697 6574925,280 647816,270 87,168
 2698 6574929,050 647817,330 87,198
 2699 6574931,080 647818,190 87,117
 2700 6574932,030 647817,620 86,440
 2701 6574931,030 647819,610 87,453
 2702 6574931,870 647819,570 86,776
 2703 6574931,060 647822,000 87,354
 2704 6574931,720 647821,730 86,460
 2705 6574935,080 647820,820 86,190
 2706 6574932,570 647818,300 86,365
 2707 6574931,000 647815,570 86,477
 2708 6574928,850 647816,230 86,717
 2709 6574930,630 647813,190 86,423
 2710 6574928,250 647814,060 86,319
 2711 6574927,090 647815,090 86,158
 2712 6574927,640 647812,700 86,280
 2713 6574930,350 647811,590 86,247
 2714 6574928,180 647810,290 86,058
 2715 6574926,050 647811,780 86,071
 2716 6574924,820 647814,200 85,868
 2717 6574921,680 647813,890 85,690
 2718 6574922,970 647811,740 85,664
 2719 6574924,350 647810,070 85,835
 2720 6574926,290 647808,550 85,828
 2721 6574924,250 647806,460 85,142
 2722 6574922,380 647807,660 85,272
 2723 6574920,600 647810,580 85,137
 2724 6574920,470 647813,430 85,070
 2725 6574918,370 647812,570 85,011
 2726 6574916,780 647810,410 85,223
 2727 6574918,580 647808,580 85,352
 2728 6574921,420 647806,310 85,069
 2729 6574923,720 647805,100 84,625
 2730 6574922,080 647802,050 85,081
 2731 6574923,550 647801,110 84,752
 2732 6574921,340 647798,970 85,002
 2733 6574919,760 647800,360 85,174
 2734 6574917,050 647803,540 85,183
 2735 6574914,920 647807,130 85,425
 2736 6574913,950 647809,240 85,437
 2737 6574911,320 647807,530 85,349
 2738 6574908,780 647806,620 85,399
 2739 6574911,210 647804,100 85,371
 2740 6574913,650 647805,300 85,277
 2741 6574915,560 647802,220 85,108
 2742 6574912,080 647800,840 85,025
 2743 6574914,040 647798,300 84,832
 2744 6574917,490 647798,890 85,000
 2745 6574920,470 647797,750 84,544
 2746 6574918,190 647795,910 83,908
 2747 6574917,980 647793,280 82,401
 2748 6574922,250 647793,920 82,143
 2749 6574926,160 647797,460 82,068
 2750 6574928,050 647801,540 82,138

2751 6574928,740 647803,910 82,115
 2752 6574931,580 647805,900 82,086
 2753 6574934,980 647805,830 82,149
 2754 6574938,640 647805,310 82,203
 2755 6574942,000 647804,720 82,397
 2756 6574945,440 647803,590 82,712
 2757 6574947,880 647804,560 82,666
 2758 6574949,360 647808,080 82,778
 2759 6574951,040 647812,140 82,889
 2760 6574952,960 647818,070 83,100
 2761 6574954,250 647822,680 83,337
 2762 6574954,750 647825,810 83,432
 2763 6574954,670 647827,770 83,594
 2764 6574950,870 647824,880 85,060
 2765 6574949,870 647821,260 85,710
 2766 6574948,710 647822,670 85,360
 2767 6574949,450 647818,510 85,477
 2768 6574947,130 647818,610 85,343
 2769 6574945,750 647819,330 85,811
 2770 6574945,850 647822,010 85,965
 2771 6574942,210 647820,080 86,403
 2772 6574942,220 647822,650 86,371
 2773 6574938,610 647822,620 86,535
 2774 6574936,590 647820,770 86,295
 2775 6574938,290 647819,560 86,438
 2776 6574939,990 647818,580 86,423
 2777 6574941,840 647817,620 86,570
 2778 6574945,260 647817,150 86,128
 2779 6574944,870 647815,300 85,837
 2780 6574943,280 647816,000 85,748
 2781 6574940,170 647816,310 85,532
 2782 6574938,120 647816,520 84,514
 2783 6574936,690 647818,390 84,439
 2784 6574935,470 647819,000 84,534
 2785 6574933,780 647816,290 84,285
 2786 6574932,850 647813,750 84,380
 2787 6574932,620 647810,480 84,710
 2788 6574935,530 647809,020 84,486
 2789 6574938,000 647808,310 83,870
 2790 6574938,550 647809,520 84,081
 2791 6574936,950 647810,650 84,420
 2792 6574935,320 647811,510 84,569
 2793 6574937,230 647812,310 84,591
 2794 6574938,910 647811,550 85,426
 2795 6574938,560 647812,620 85,474
 2796 6574935,420 647815,480 84,370
 2797 6574937,220 647814,530 84,585
 2798 6574938,800 647813,830 85,358
 2799 6574940,450 647812,180 85,246
 2800 6574942,660 647812,160 85,243
 2801 6574944,940 647812,720 84,312
 2802 6574946,570 647814,240 84,361
 2803 6574947,330 647815,350 84,498
 2804 6574949,640 647816,630 84,871

2805	6574948,770	647812,500	84,120	2859	6574926,160	647631,450	82,639
2806	6574947,950	647809,600	83,897	2860	6574925,200	647625,880	82,706
2807	6574946,740	647810,880	84,019	2861	6574926,250	647625,570	83,184
2808	6574943,400	647809,850	84,072	2862	6574928,080	647625,160	83,435
2809	6574945,030	647808,420	83,815	2863	6574924,740	647621,470	82,836
2810	6574947,280	647807,340	83,626	2864	6574926,390	647622,030	83,096
2811	6574946,640	647805,560	83,612	2865	6574928,500	647621,600	83,827
2812	6574944,450	647806,250	83,813	2866	6574928,520	647616,380	83,675
2813	6574942,220	647807,530	84,097	2867	6574926,810	647617,070	83,477
2814	6574942,130	647809,280	84,270	2868	6574925,370	647616,790	82,921
2815	6574940,150	647809,040	84,096	2869	6574924,980	647612,510	82,739
2816	6574940,090	647808,010	84,069	2870	6574926,260	647612,490	83,378
2817	6574943,900	647729,460	82,784	2871	6574927,530	647612,160	83,547
2818	6574940,140	647728,090	82,802	2872	6574927,280	647607,810	83,329
2819	6574938,990	647723,980	82,818	2873	6574925,620	647607,960	83,038
2820	6574941,440	647721,260	82,731	2874	6574924,560	647608,120	82,530
2821	6574943,870	647720,770	82,860	2875	6574926,200	647605,190	83,068
2822	6574946,240	647721,480	82,719	2876	6574924,880	647605,000	82,428
2823	6574946,840	647724,020	83,190	2877	6574923,290	647602,620	82,375
2824	6574944,310	647724,420	84,894	2878	6574925,820	647603,580	84,584
2825	6574943,950	647723,980	84,895	2879	6574920,550	647600,570	82,498
2826	6574942,210	647724,970	84,944	2880	6574915,900	647600,640	82,569
2827	6574942,650	647725,530	84,881	2881	6574908,950	647601,970	82,463
2828	6574945,690	647728,610	82,811	2882	6574901,340	647605,670	82,419
2829	6574947,000	647726,140	82,861	2883	6574895,000	647607,140	82,464
2830	6574948,830	647718,710	82,899	2884	6574889,630	647610,620	82,493
2831	6574947,020	647713,060	82,920	2885	6574885,100	647611,850	82,724
2832	6574946,540	647708,070	82,719	2886	6574882,050	647611,830	82,462
2833	6574944,270	647702,930	82,672	2887	6574877,970	647614,740	82,519
2834	6574942,890	647697,360	82,738	2888	6574873,620	647618,260	82,530
2835	6574942,060	647692,220	82,670	2889	6574871,330	647620,990	82,466
2836	6574940,330	647687,090	82,649	2890	6574868,810	647623,870	82,618
2837	6574939,520	647681,970	82,627	2891	6574862,940	647627,670	82,583
2838	6574938,910	647676,380	82,759	2892	6574857,640	647631,030	82,520
2839	6574938,040	647671,460	82,833	2893	6574853,070	647635,430	82,621
2840	6574937,450	647666,420	82,960	2894	6574849,510	647640,510	82,667
2841	6574936,460	647662,710	83,185	2895	6574844,040	647644,370	82,686
2842	6574935,400	647659,840	83,155	2896	6574838,140	647648,110	82,847
2843	6574935,880	647659,670	83,490	2897	6574833,050	647651,160	82,866
2844	6574937,000	647659,180	83,665	2898	6574827,860	647653,190	82,801
2845	6574935,630	647653,840	83,557	2899	6574822,060	647656,470	82,663
2846	6574933,810	647654,260	83,497	2900	6574815,690	647659,470	82,627
2847	6574933,140	647654,470	83,209	2901	6574809,330	647661,170	82,536
2848	6574931,230	647649,490	83,067	2902	6574802,350	647663,150	82,344
2849	6574931,840	647649,210	83,381	2903	6574798,580	647664,160	82,472
2850	6574933,980	647648,270	83,336	2904	6574796,990	647665,450	82,545
2851	6574933,000	647643,090	83,431	2905	6574797,590	647668,700	82,407
2852	6574930,510	647643,180	83,268	2906	6574795,910	647673,980	83,115
2853	6574929,630	647643,140	82,950	2907	6574795,370	647676,680	83,219
2854	6574927,790	647637,940	82,786	2908	6574791,730	647672,720	84,930
2855	6574928,890	647637,550	83,320	2909	6574793,510	647672,810	84,633
2856	6574930,820	647636,680	83,449	2910	6574793,830	647670,660	84,626
2857	6574930,130	647631,170	83,349	2911	6574791,800	647670,160	84,912
2858	6574927,400	647631,450	83,223	2912	6574793,550	647666,020	84,662

2913 6574790,840 647665,220 85,595
 2914 6574792,990 647661,830 85,088
 2915 6574789,880 647660,130 86,474
 2916 6574794,580 647659,350 85,444
 2917 6574799,620 647657,250 85,955
 2918 6574806,090 647654,170 86,349
 2919 6574811,990 647652,960 85,973
 2920 6574810,150 647648,500 87,592
 2921 6574816,990 647650,640 85,701
 2922 6574816,070 647645,950 87,330
 2923 6574823,170 647646,450 86,092
 2924 6574821,580 647642,320 87,664
 2925 6574829,300 647640,580 87,174
 2926 6574831,320 647643,750 85,839
 2927 6574834,440 647638,130 86,636
 2928 6574837,170 647641,140 85,837
 2929 6574841,190 647638,660 85,624
 2930 6574838,630 647635,720 86,406
 2931 6574844,420 647634,490 85,883
 2932 6574857,900 647636,620 82,422
 2933 6574858,970 647639,190 82,389
 2934 6574852,120 647641,020 82,534
 2935 6574852,600 647644,790 82,595
 2936 6574847,180 647648,640 82,562
 2937 6574845,430 647646,720 82,584
 2938 6574838,440 647652,900 82,600
 2939 6574832,960 647655,440 82,603
 2940 6574826,230 647659,330 82,555
 2941 6574818,210 647663,250 82,646
 2942 6574811,140 647666,050 82,700
 2943 6574805,140 647667,140 82,360
 2944 6574802,370 647668,280 82,286
 2945 6574796,370 647679,120 82,671
 2946 6574793,210 647681,250 83,228
 2947 6574794,750 647684,140 82,798
 2948 6574801,750 647681,240 82,609
 2949 6574803,290 647675,310 82,588
 2950 6574809,350 647672,740 82,724
 2951 6574816,530 647669,740 82,875
 2952 6574822,520 647666,560 82,665
 2953 6574830,010 647662,750 82,594
 2954 6574837,310 647659,140 82,661
 2955 6574844,140 647657,050 82,625
 2956 6574850,500 647664,560 82,565
 2957 6574856,480 647671,460 82,405
 2958 6574862,950 647680,860 82,354
 2959 6574867,310 647687,250 82,364
 2960 6574870,870 647686,200 82,432
 2961 6574871,490 647685,740 82,190
 2962 6574869,520 647682,940 82,315
 2963 6574869,930 647682,780 82,179
 2964 6574869,380 647680,610 82,338
 2965 6574869,660 647680,330 82,216
 2966 6574867,220 647676,780 82,376

2967 6574867,610 647676,490 82,181
 2968 6574864,300 647672,080 82,389
 2969 6574864,670 647671,560 82,215
 2970 6574862,400 647669,140 82,369
 2971 6574862,670 647668,590 82,203
 2972 6574859,840 647668,250 82,303
 2973 6574859,860 647667,900 82,159
 2974 6574856,900 647666,430 82,355
 2975 6574857,140 647665,910 82,188
 2976 6574854,500 647664,810 82,381
 2977 6574854,690 647664,280 82,189
 2978 6574851,960 647660,580 82,396
 2979 6574852,450 647660,190 82,190
 2980 6574850,680 647657,650 82,381
 2981 6574851,650 647657,400 82,159
 2982 6574850,560 647653,250 82,458
 2983 6574851,220 647653,380 82,178
 2984 6574852,450 647649,610 82,399
 2985 6574852,720 647649,940 82,168
 2986 6574856,120 647647,090 82,491
 2987 6574856,390 647647,490 82,177
 2988 6574859,930 647644,980 82,554
 2989 6574860,130 647645,430 82,204
 2990 6574862,710 647642,660 82,455
 2991 6574863,430 647643,300 82,221
 2992 6574864,710 647642,240 82,199
 2993 6574864,710 647642,240 82,203
 2994 6574864,290 647638,630 82,259
 2995 6574862,220 647635,400 82,377
 2996 6574866,530 647631,010 82,453
 2997 6574869,490 647635,190 82,307
 2998 6574869,250 647638,850 82,252
 2999 6574875,150 647637,540 82,302
 3000 6574873,130 647640,230 82,381
 3001 6574870,300 647644,860 82,416
 3002 6574869,920 647645,390 82,207
 3003 6574871,780 647647,330 82,482
 3004 6574871,760 647647,960 82,188
 3005 6574873,460 647646,560 82,451
 3006 6574873,590 647647,070 82,177
 3007 6574875,780 647647,320 82,254
 3008 6574875,470 647647,680 82,102
 3009 6574875,280 647642,680 82,321
 3010 6574876,950 647648,030 82,287
 3011 6574876,650 647648,570 82,116
 3012 6574878,490 647648,260 82,434
 3013 6574877,860 647648,740 82,147
 3014 6574879,440 647650,810 82,171
 3015 6574881,100 647649,990 83,560
 3016 6574880,250 647647,010 83,655
 3017 6574877,770 647646,130 82,437
 3018 6574879,350 647643,740 82,343
 3019 6574883,520 647643,170 82,287
 3020 6574888,430 647644,020 82,372

3021 6574891,840 647642,720 82,384
 3022 6574894,340 647642,330 82,610
 3023 6574896,090 647642,010 82,741
 3024 6574897,640 647637,440 82,683
 3025 6574900,860 647635,590 82,737
 3026 6574902,470 647632,300 82,768
 3027 6574905,220 647631,720 82,802
 3028 6574910,040 647632,980 82,821
 3029 6574913,340 647635,130 82,775
 3030 6574917,040 647637,180 82,924
 3031 6574918,290 647640,960 83,182
 3032 6574917,320 647641,250 83,740
 3033 6574918,980 647644,010 83,300
 3034 6574926,510 647646,560 82,905
 3035 6574923,150 647638,290 82,694
 3036 6574921,240 647631,720 82,616
 3037 6574919,790 647624,050 82,670
 3038 6574919,350 647617,330 82,628
 3039 6574918,510 647608,650 82,474
 3040 6574911,250 647608,270 82,362
 3041 6574903,880 647610,960 82,450
 3042 6574895,980 647614,280 82,475
 3043 6574887,650 647618,790 82,473
 3044 6574882,580 647621,910 82,266
 3045 6574876,770 647625,810 82,255
 3046 6574872,930 647628,600 82,281
 3047 6574876,140 647632,640 82,292
 3048 6574879,410 647638,060 82,418
 3049 6574883,660 647637,930 82,360
 3050 6574887,300 647638,910 82,342
 3051 6574885,570 647634,580 82,208
 3052 6574884,540 647629,510 82,412
 3053 6574891,220 647625,980 82,476
 3054 6574892,590 647631,500 82,468
 3055 6574893,880 647635,870 82,554
 3056 6574898,740 647628,810 82,625
 3057 6574896,820 647623,310 82,552
 3058 6574904,070 647621,050 82,662
 3059 6574905,880 647626,950 82,709
 3060 6574911,400 647628,960 82,717
 3061 6574910,080 647623,210 82,736
 3062 6574909,440 647619,040 82,645
 3063 6574913,960 647617,710 82,708
 3064 6574915,730 647624,980 82,787
 3065 6574918,250 647631,820 82,667
 3066 6574924,040 647643,480 82,783
 3067 6574927,530 647650,010 82,969
 3068 6574925,430 647653,970 83,123
 3069 6574928,840 647655,210 83,224
 3070 6574931,640 647659,030 82,998
 3071 6574933,140 647663,640 82,944
 3072 6574934,040 647668,110 82,677
 3073 6574933,190 647672,910 82,905
 3074 6574932,810 647676,950 82,893

3075 6574935,670 647676,710 82,560
 3076 6574935,120 647681,080 82,522
 3077 6574932,300 647680,000 82,810
 3078 6574931,650 647681,130 82,867
 3079 6574930,430 647684,850 82,882
 3080 6574927,690 647684,400 82,893
 3081 6574928,110 647680,540 85,642
 3082 6574928,010 647678,170 86,876
 3083 6574927,940 647678,100 86,618
 3084 6574928,130 647675,420 87,089
 3085 6574927,800 647671,280 88,472
 3086 6574927,560 647669,030 88,877
 3087 6574927,570 647669,030 88,806
 3088 6574928,420 647665,910 87,625
 3089 6574927,010 647662,420 87,890
 3090 6574926,610 647659,680 87,635
 3091 6574916,290 647651,030 83,531
 3092 6574917,040 647639,750 83,789
 3093 6574914,500 647637,480 83,896
 3094 6574910,770 647635,980 84,003
 3095 6574908,150 647634,450 84,152
 3096 6574904,750 647634,150 84,333
 3097 6574902,510 647637,200 84,338
 3098 6574899,580 647638,640 84,084
 3099 6574898,220 647640,720 84,073
 3100 6574897,030 647643,970 84,037
 3101 6574893,460 647644,840 84,403
 3102 6574889,520 647646,940 84,131
 3103 6574886,820 647647,080 84,751
 3104 6574884,160 647646,650 84,485
 3105 6574882,420 647645,970 84,408
 3106 6574881,560 647645,220 84,158
 3107 6574883,570 647649,420 85,383
 3108 6574885,310 647651,410 85,871
 3109 6574886,050 647651,440 85,820
 3110 6574886,630 647653,980 85,394
 3111 6574887,640 647649,670 85,676
 3112 6574887,310 647648,880 85,742
 3113 6574890,940 647648,770 85,153
 3114 6574891,100 647649,650 85,073
 3115 6574893,090 647649,090 85,064
 3116 6574893,000 647648,370 85,009
 3117 6574893,930 647647,270 84,224
 3118 6574895,200 647648,470 83,998
 3119 6574894,370 647650,310 84,006
 3120 6574892,070 647651,370 83,981
 3121 6574890,110 647650,980 84,096
 3122 6574888,530 647652,570 83,967
 3123 6574889,130 647655,490 83,823
 3124 6574886,590 647656,720 83,746
 3125 6574887,160 647655,190 84,926
 3126 6574884,830 647656,940 83,110
 3127 6574882,510 647654,690 82,915
 3128 6574881,050 647654,900 82,180

3129 6574884,380 647654,430 83,960
 3130 6574881,180 647659,280 82,196
 3131 6574882,040 647659,040 82,305
 3132 6574883,750 647662,330 82,186
 3133 6574884,560 647661,800 82,400
 3134 6574884,170 647665,150 82,213
 3135 6574885,250 647664,940 82,970
 3136 6574886,250 647668,890 83,066
 3137 6574885,530 647670,020 82,185
 3138 6574886,750 647672,860 82,170
 3139 6574887,450 647672,450 82,295
 3140 6574888,470 647672,030 82,448
 3141 6574889,270 647676,870 82,376
 3142 6574888,420 647677,910 82,165
 3143 6574888,530 647681,560 82,217
 3144 6574889,260 647681,960 82,684
 3145 6574887,490 647685,010 82,181
 3146 6574888,320 647685,480 82,476
 3147 6574885,800 647688,040 82,175
 3148 6574886,270 647688,710 82,540
 3149 6574882,600 647689,090 82,128
 3150 6574882,370 647689,930 82,445
 3151 6574878,730 647688,300 82,132
 3152 6574878,580 647688,880 82,358
 3153 6574874,260 647687,530 82,110
 3154 6574873,910 647688,120 82,365
 3155 6574870,730 647686,970 82,367
 3156 6574869,830 647688,060 82,377
 3157 6574870,910 647689,280 82,319
 3158 6574871,100 647688,240 82,929
 3159 6574873,600 647689,390 83,024
 3160 6574873,390 647690,020 83,065
 3161 6574872,830 647691,190 82,423
 3162 6574877,700 647690,130 83,471
 3163 6574877,520 647690,560 83,400
 3164 6574877,370 647692,170 82,490
 3165 6574880,870 647691,110 83,401
 3166 6574880,910 647691,720 83,301
 3167 6574880,860 647692,960 82,678
 3168 6574884,450 647691,320 83,291
 3169 6574884,590 647692,220 83,398
 3170 6574884,730 647693,480 82,894
 3171 6574886,150 647690,660 83,562
 3172 6574887,030 647691,910 83,385
 3173 6574887,380 647692,980 82,987
 3174 6574887,530 647689,390 83,577
 3175 6574888,930 647690,040 83,645
 3176 6574889,830 647690,400 83,111
 3177 6574888,870 647688,610 83,349
 3178 6574888,200 647688,390 83,599
 3179 6574889,500 647684,890 83,514
 3180 6574890,150 647685,130 83,462
 3181 6574890,990 647685,520 83,106
 3182 6574890,090 647685,100 83,400

3183 6574890,540 647681,450 83,709
 3184 6574890,530 647681,430 83,717
 3185 6574889,630 647681,150 82,981
 3186 6574891,480 647681,100 83,785
 3187 6574892,250 647681,390 83,379
 3188 6574890,590 647676,880 83,107
 3189 6574892,110 647677,090 84,091
 3190 6574892,470 647677,490 83,972
 3191 6574893,390 647677,730 83,446
 3192 6574894,030 647674,650 83,641
 3193 6574892,910 647674,750 84,223
 3194 6574892,380 647674,570 84,154
 3195 6574891,350 647674,110 83,326
 3196 6574890,840 647671,850 83,525
 3197 6574891,920 647671,400 84,407
 3198 6574892,370 647671,150 84,371
 3199 6574893,320 647670,650 83,696
 3200 6574887,500 647667,850 83,760
 3201 6574888,570 647667,660 84,600
 3202 6574889,050 647667,440 84,446
 3203 6574889,890 647666,800 83,797
 3204 6574888,370 647664,480 83,604
 3205 6574887,390 647664,640 83,930
 3206 6574886,680 647664,720 83,914
 3207 6574885,790 647664,310 83,235
 3208 6574886,620 647662,650 83,227
 3209 6574888,070 647663,600 83,602
 3210 6574886,660 647659,400 83,670
 3211 6574892,460 647659,210 83,803
 3212 6574895,340 647653,010 83,955
 3213 6574900,720 647646,100 83,978
 3214 6574906,010 647640,400 84,133
 3215 6574910,990 647644,630 83,911
 3216 6574913,290 647648,770 83,699
 3217 6574908,620 647652,260 83,743
 3218 6574905,570 647649,460 83,839
 3219 6574900,740 647656,270 83,862
 3220 6574903,600 647658,680 83,763
 3221 6574901,030 647664,260 83,815
 3222 6574894,930 647663,430 83,750
 3223 6574896,220 647671,200 83,660
 3224 6574900,480 647671,990 83,657
 3225 6574899,170 647677,960 83,515
 3226 6574895,500 647677,880 83,556
 3227 6574895,290 647684,080 83,325
 3228 6574903,200 647684,100 83,099
 3229 6574911,600 647689,380 82,891
 3230 6574919,430 647689,980 82,600
 3231 6574926,970 647691,820 82,805
 3232 6574933,300 647691,500 82,684
 3233 6574937,430 647691,730 82,578
 3234 6574938,250 647700,790 82,458
 3235 6574940,000 647710,260 82,717
 3236 6574940,950 647716,700 82,732

3237	6574934,300	647719,050	82,770	3291	6574827,380	647714,810	85,878
3238	6574933,970	647711,280	82,768	3292	6574826,130	647714,580	85,955
3239	6574933,280	647704,010	82,857	3293	6574825,480	647715,220	86,049
3240	6574932,290	647698,920	82,903	3294	6574825,560	647714,650	85,921
3241	6574925,830	647699,250	82,852	3295	6574823,250	647714,110	84,728
3242	6574919,830	647696,720	82,699	3296	6574821,920	647713,110	84,193
3243	6574919,160	647703,720	82,774	3297	6574820,580	647712,770	83,589
3244	6574911,750	647705,080	82,730	3298	6574884,560	647683,310	81,300
3245	6574909,660	647697,750	82,862	3299	6574883,160	647685,580	81,179
3246	6574902,720	647696,630	82,894	3300	6574876,280	647685,010	80,794
3247	6574902,860	647702,520	82,852	3301	6574872,780	647682,720	80,739
3248	6574841,050	647725,210	82,637	3302	6574869,120	647673,330	80,731
3249	6574840,320	647728,750	82,544	3303	6574862,040	647665,350	80,563
3250	6574837,490	647731,290	82,458	3304	6574857,180	647662,100	80,467
3251	6574834,010	647730,880	82,434	3305	6574855,260	647656,810	80,784
3252	6574830,170	647729,850	82,436	3306	6574857,070	647651,420	81,084
3253	6574825,840	647731,260	82,542	3307	6574863,970	647647,350	81,304
3254	6574822,370	647730,820	82,496	3308	6574863,970	647647,410	81,267
3255	6574820,110	647728,060	82,432	3309	6574875,190	647651,680	80,937
3256	6574820,820	647724,280	82,396				
3257	6574820,570	647721,840	82,473				
3258	6574820,620	647717,940	82,442				
3259	6574819,090	647713,760	82,523				
3260	6574818,910	647711,340	82,537				
3261	6574822,320	647710,840	82,707				
3262	6574826,170	647711,520	82,818				
3263	6574829,230	647711,360	82,863				
3264	6574832,190	647714,670	82,857				
3265	6574835,770	647719,440	82,776				
3266	6574839,310	647722,490	82,797				
3267	6574840,980	647725,560	82,643				
3268	6574837,080	647726,170	85,313				
3269	6574836,190	647726,560	85,652				
3270	6574835,370	647724,510	86,094				
3271	6574834,820	647724,710	86,087				
3272	6574832,840	647722,490	85,974				
3273	6574832,940	647723,820	85,784				
3274	6574830,870	647723,650	85,631				
3275	6574828,320	647724,990	85,730				
3276	6574826,090	647726,860	85,426				
3277	6574824,750	647726,990	85,212				
3278	6574825,010	647725,800	85,288				
3279	6574825,510	647723,310	85,319				
3280	6574825,570	647721,350	85,527				
3281	6574827,020	647723,510	85,469				
3282	6574829,140	647722,290	85,740				
3283	6574828,250	647720,340	85,811				
3284	6574831,640	647721,310	86,078				
3285	6574829,780	647718,700	86,090				
3286	6574828,650	647717,770	86,062				
3287	6574827,480	647718,800	86,167				
3288	6574825,690	647719,430	85,583				
3289	6574826,420	647717,220	86,229				
3290	6574827,820	647716,110	85,978				